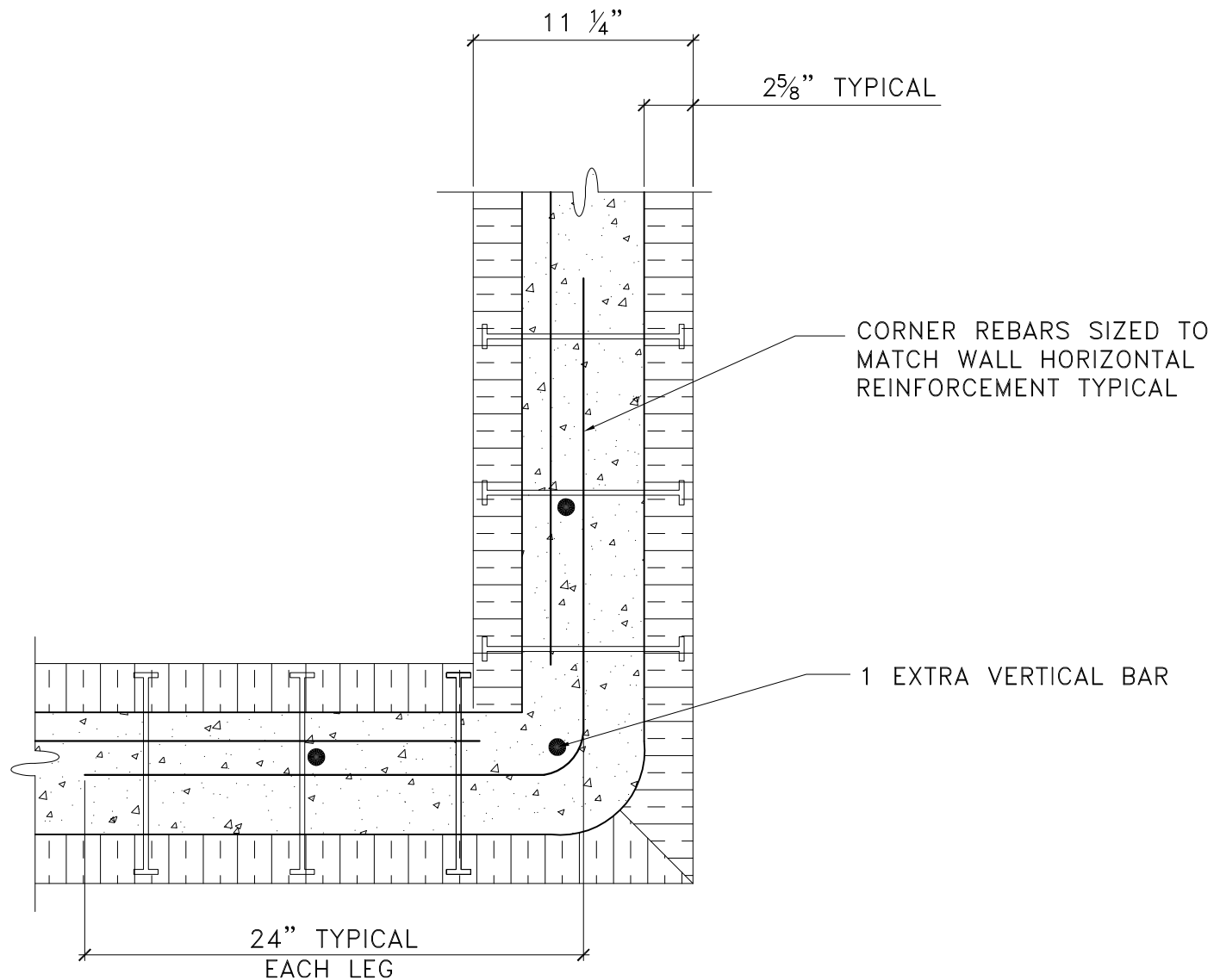


# Advantage ICF System Design Manual

## 6 Inch ICF Typical Corner Detail



*Better building ideas from PFB* ™



**NOTES:**

1. DETAIL TO BE USED IN CONJUNCTION WITH ADVANTAGE ICF SYSTEM TECHNICAL & INSTALLATION MANUAL.
2. REBAR OVERLAP TO BE 450 MM (18") FOR 10M AND 650 MM (26") FOR 15M.
3. MULTI STRAPS INSTALLED PRIOR TO POUR AS PER INSTALLATION MANUAL.

No.	REVISION DESCRIPTION	DATE	BY	CHKD	APPD



PLANT OR PROJECT 6" ADVANTAGE ICF SYSTEM

**TYPICAL CORNER DETAIL**

SCALE NTS

DESIGN G DOREN	DATE JULY, 09
DRAWN L XIE	DATE JULY, 09
CHECKED J WHALEN	DATE JULY, 09
DRAWING No.	REV.

**D.9.6**