

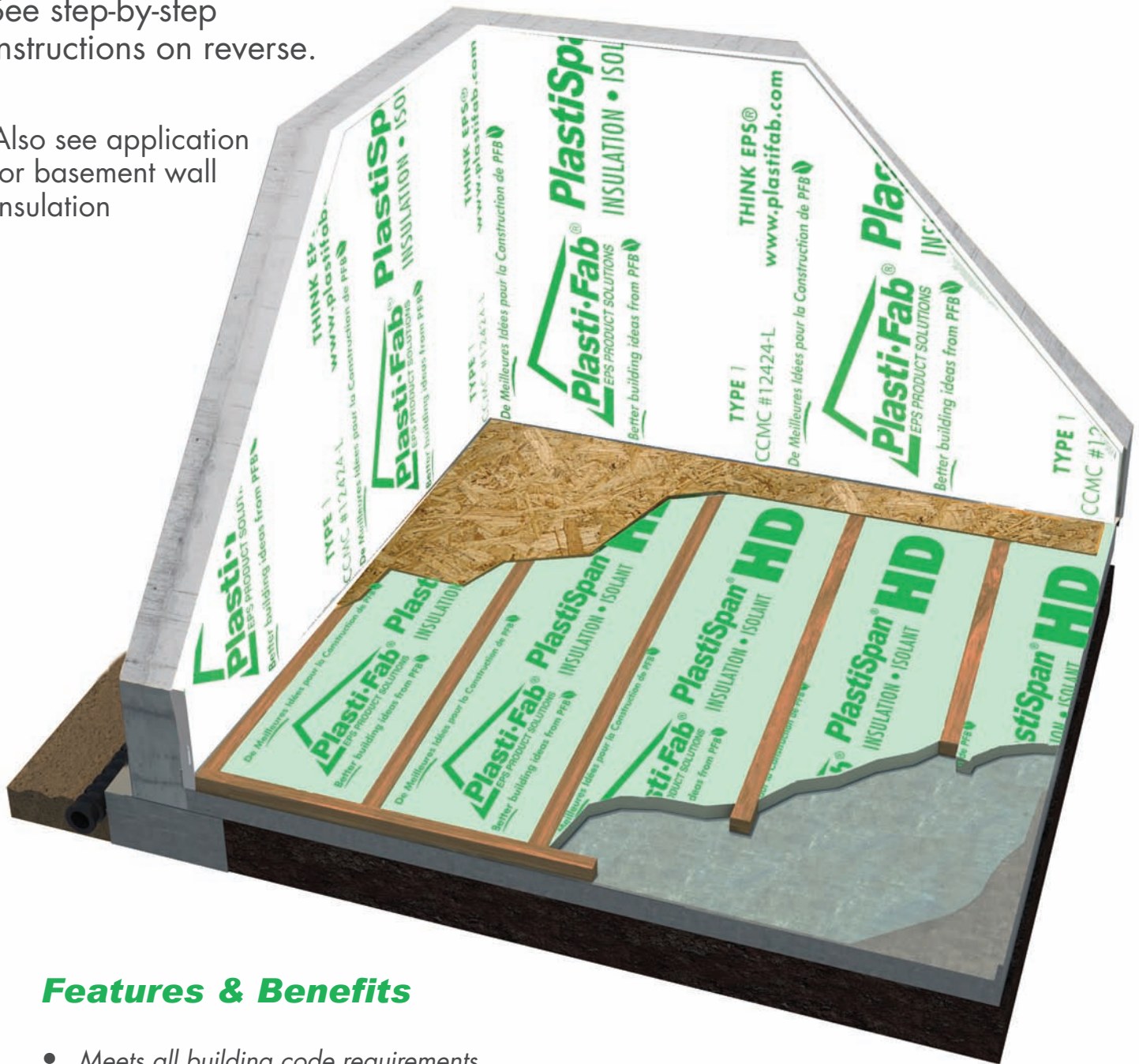
# PlastiSpan® HD Insulation

## INSULATING ABOVE A BASEMENT SLAB



See step-by-step instructions on reverse.

Also see application for basement wall insulation



### Features & Benefits

- Meets all building code requirements
- Meets CAN/ULC-S701, Type 2
- Long term RSI 0.70/25 mm (R-value 4.04/inch)
- Compressive Resistance: 16 psi
- Closed cell insulation resists moisture
- CCMC 12425-L
- Custom sizes available

### Energy Tip

Insulating your basement floor provides added comfort and increased energy savings.

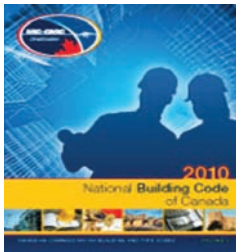
# PlastiSpan® HD Insulation

## INSULATING ABOVE A BASEMENT SLAB



Follow these simple How-To steps to install your PlastiSpan HD insulation for an insulated basement floor.

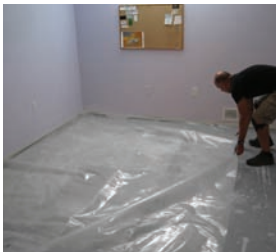
MILLIMETERS	RSI	INCHES	R-VALUE
19	0.53	3/4"	3.03
25	0.70	1"	4.04
38	1.06	1 1/2"	6.06
50	1.40	2"	8.08
75	2.10	3"	12.12



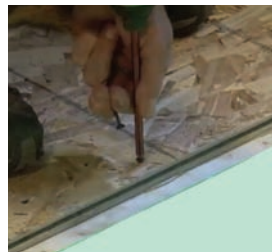
- 1. Follow the building code.**  
Be sure to follow the building code requirements applicable in your region.



- 5. Prepare to Lay Sub-Floor**  
Mark the walls where the nailer centres intersect it to help locate the nailers when attaching the sub-floor. The sub-floor thickness should be 5/8". Snap chalk lines across the nailers to ensure the sub floor material is placed squarely.



- 2. Install a Moisture Barrier**  
Cover the entire floor area with a 6-mil polyethylene moisture barrier to eliminate moisture migration into your living area. Plan your project to place your insulation and nailers at 24" on centre across the floor in one direction.



- 6. Secure the Sub-Floor**  
Be sure to stagger the floor sheathing joints for extra stability. Apply adhesive to the nailers. Fasten the 5/8" floor sheathing directly to the nailers using either ringed nails or deck screws every 8". With an air nailer, use 2-inch ringed floor sheathing or screw nails. With a screw gun, use 1-1/2" or 1-3/4" deck screws.



- 3. Attach Perimeter Nailers**  
Attach nailer with the same thickness as the insulation, around the perimeter, using self-tapping concrete screws penetrating the concrete floor as recommended by the screw manufacturer.



- 7. Ready for Floor Finishing.**  
Your basement floor is now correctly insulated and ready for your final decorating touch. You should notice the finished floor is now much more comfortable.



- 4. Install Nailers and Insulation**  
Cut the first row of insulation to a 21-3/4" width. Cut subsequent rows to 22-1/2" widths. Use the insulation cut as guides to place successive rows of nailers at 24" on centres.



Watch the How-To video on our YouTube Channel  
Search: Plasti-Fab



**1-88-THINK-EPS®**  
**1-888-446-5377**

View how-to videos, project profiles & testimonials @ [www.plastifab.com](http://www.plastifab.com)



Follow us on twitter: @PlastiFab  
Subscribe to our blog: [Plastifab.Wordpress.com](http://Plastifab.Wordpress.com)

Copyright © 2013 by Plasti-Fab Ltd. All rights reserved.  
Plasti-Fab & PlastiSpan are registered trademarks of Plasti-Fab Ltd.