

NOTES:

1. DETAIL TO BE USED IN CONJUNCTION WITH ADVANTAGE ICF SYSTEM TECHNICAL & INSTALLATION MANUAL.
2. DOWEL FROM FOOTING TO MATCH SIZE OF VERTICAL REBAR AT A MAXIMUM SPACING OF 24" O.C. WITH MINIMUM 8" TOTAL EMBEDMENT INTO FOOTING AND 3" COVER THICKNESS OR AS PER LOCAL CODE. IF FOOTING IS LESS THAN 11" THICK, USE "L" SHAPE DOWEL.

No.	REVISION DESCRIPTION	DATE	BY	CHKD	APPD



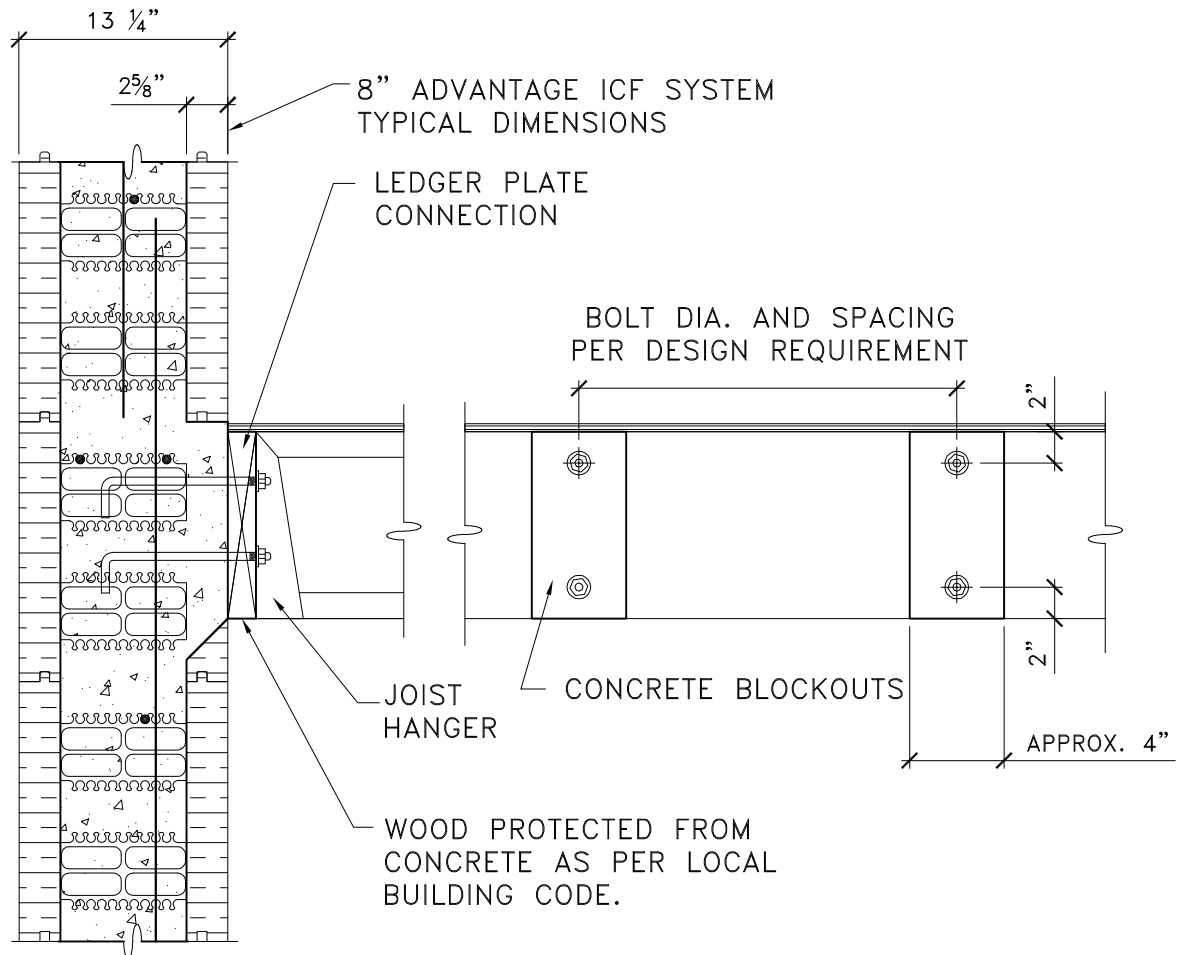
PLANT OR PROJECT 8" ADVANTAGE ICF SYSTEM

WALL TO FOOTING CONNECTION DETAIL

SCALE NTS

DESIGN G DOREN	DATE JULY, 09
DRAWN L XIE	DATE JULY, 09
CHECKED J WHALEN	DATE JULY, 09
DRAWING No.	REV.

D.1.8



NOTE:

DETAIL TO BE USED IN CONJUNCTION WITH ADVANTAGE
ICF SYSTEM TECHNICAL & INSTALLATION MANUAL

No.	REVISION DESCRIPTION	DATE	BY	CHKD	APPD



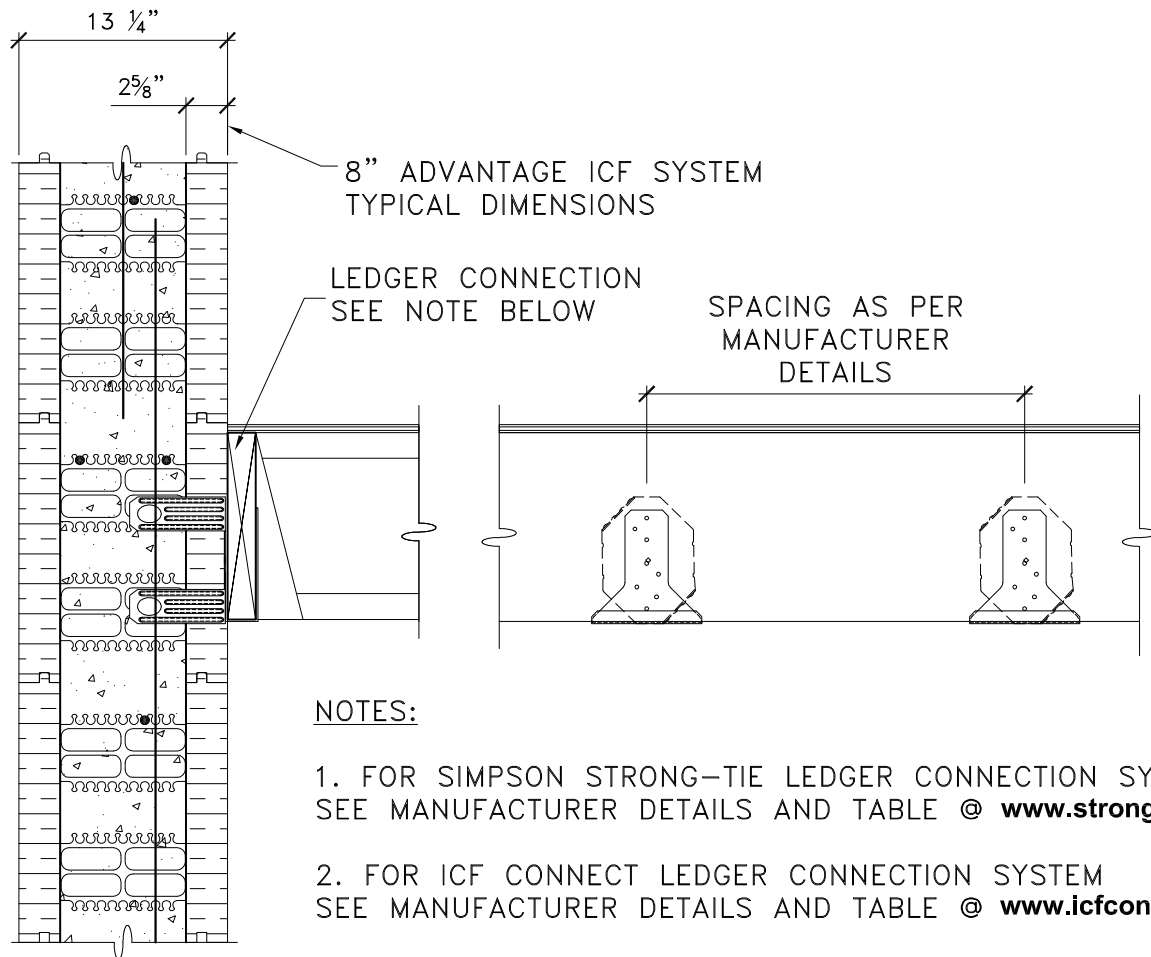
PLANT OR
PROJECT 8" ADVANTAGE ICF SYSTEM

FLOOR LEDGER WITH ANCHOR BOLTS

SCALE NTS

DESIGN G DOREN	DATE JULY, 09
DRAWN L XIE	DATE JULY, 09
CHECKED J WHALEN	DATE JULY, 09
DRAWING No.	REV.

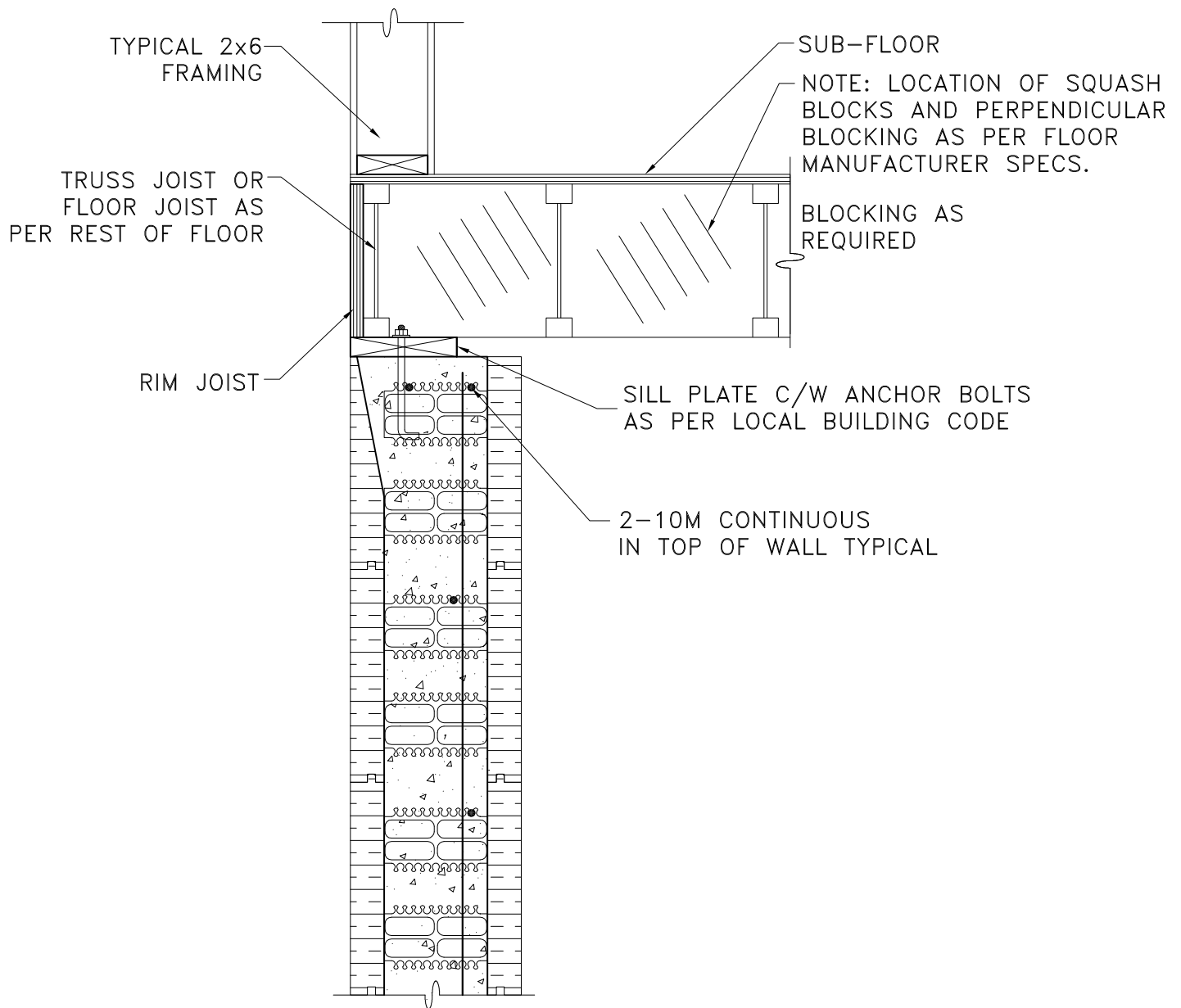
D.2.8



No.	REVISION DESCRIPTION	DATE	BY	CHKD	APPD



PLANT OR PROJECT	8" ADVANTAGE ICF SYSTEM	SCALE	NTS
FLOOR JOIST AND LEDGER CONNECTORS		DESIGN	DATE
		G DOREN	JULY, 09
		DRAWN	DATE
		L XIE	JULY, 09
		CHECKED	DATE
		J WHALEN	JULY, 09
		DRAWING No.	REV.
		D.3.8	



No.	REVISION DESCRIPTION	DATE	BY	CHKD	APPD



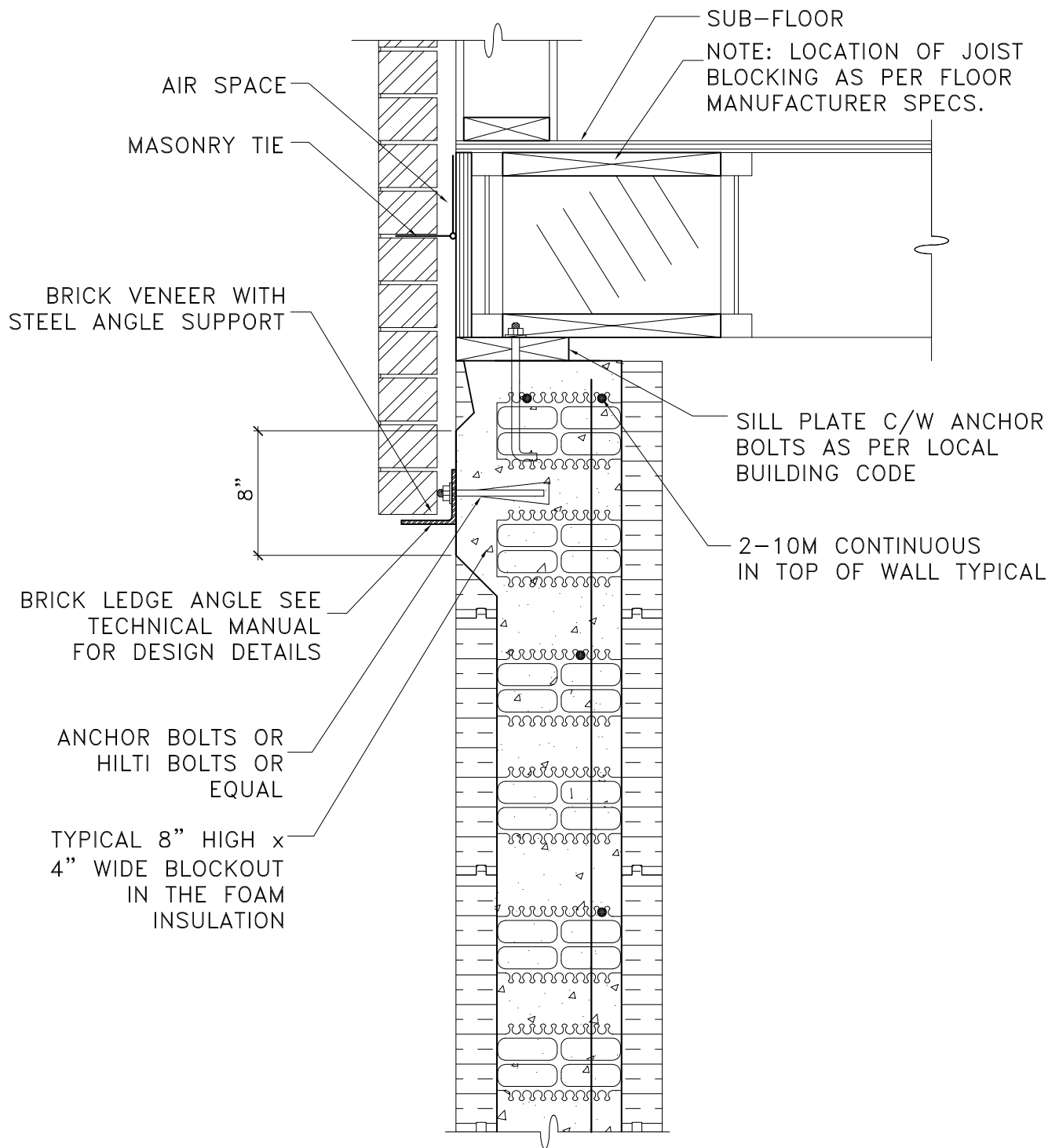
PLANT OR PROJECT 8" ADVANTAGE ICF SYSTEM

FLOOR JOIST FOR WOOD STUD MAIN FLOOR

SCALE NTS

DESIGN G DOREN	DATE JULY, 09
DRAWN L XIE	DATE JULY, 09
CHECKED J WHALEN	DATE JULY, 09
DRAWING No.	REV.

D.4.8



NOTE:
 DETAIL TO BE USED IN CONJUNCTION WITH ADVANTAGE
 ICF SYSTEM TECHNICAL & INSTALLATION MANUAL

No.	REVISION DESCRIPTION	DATE	BY	CHKD	APPD



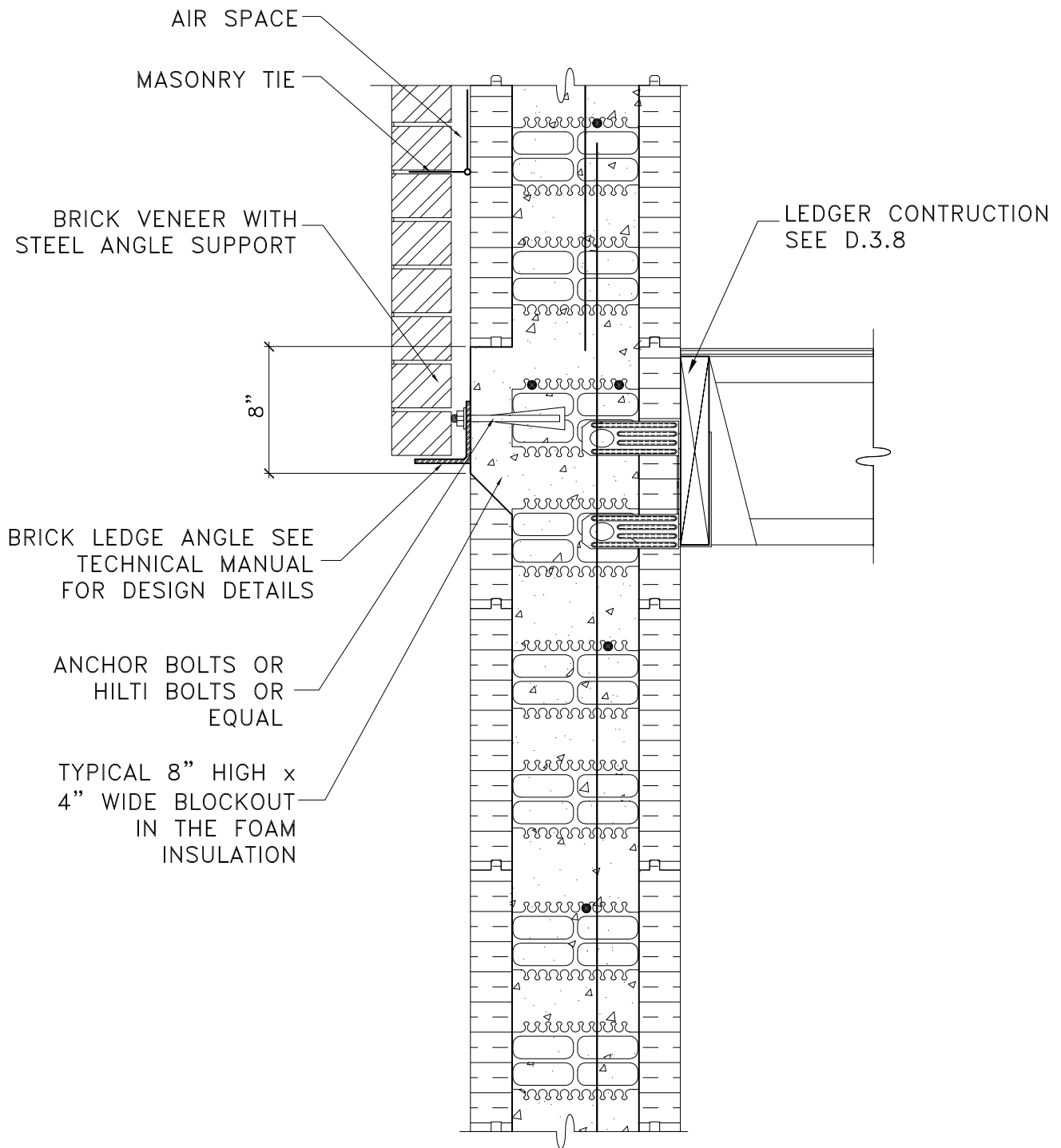
PLANT OR PROJECT 8" ADVANTAGE ICF SYSTEM

BRICK ANGLE LEDGE DETAIL - TOP OF WALL

SCALE NTS

DESIGN G DOREN	DATE JULY, 09
DRAWN L XIE	DATE JULY, 09
CHECKED J WHALEN	DATE JULY, 09
DRAWING No.	REV.

D.5.8



NOTE:
 DETAIL TO BE USED IN CONJUNCTION WITH ADVANTAGE
 ICF SYSTEM TECHNICAL & INSTALLATION MANUAL

No.	REVISION DESCRIPTION	DATE	BY	CHKD	APPD



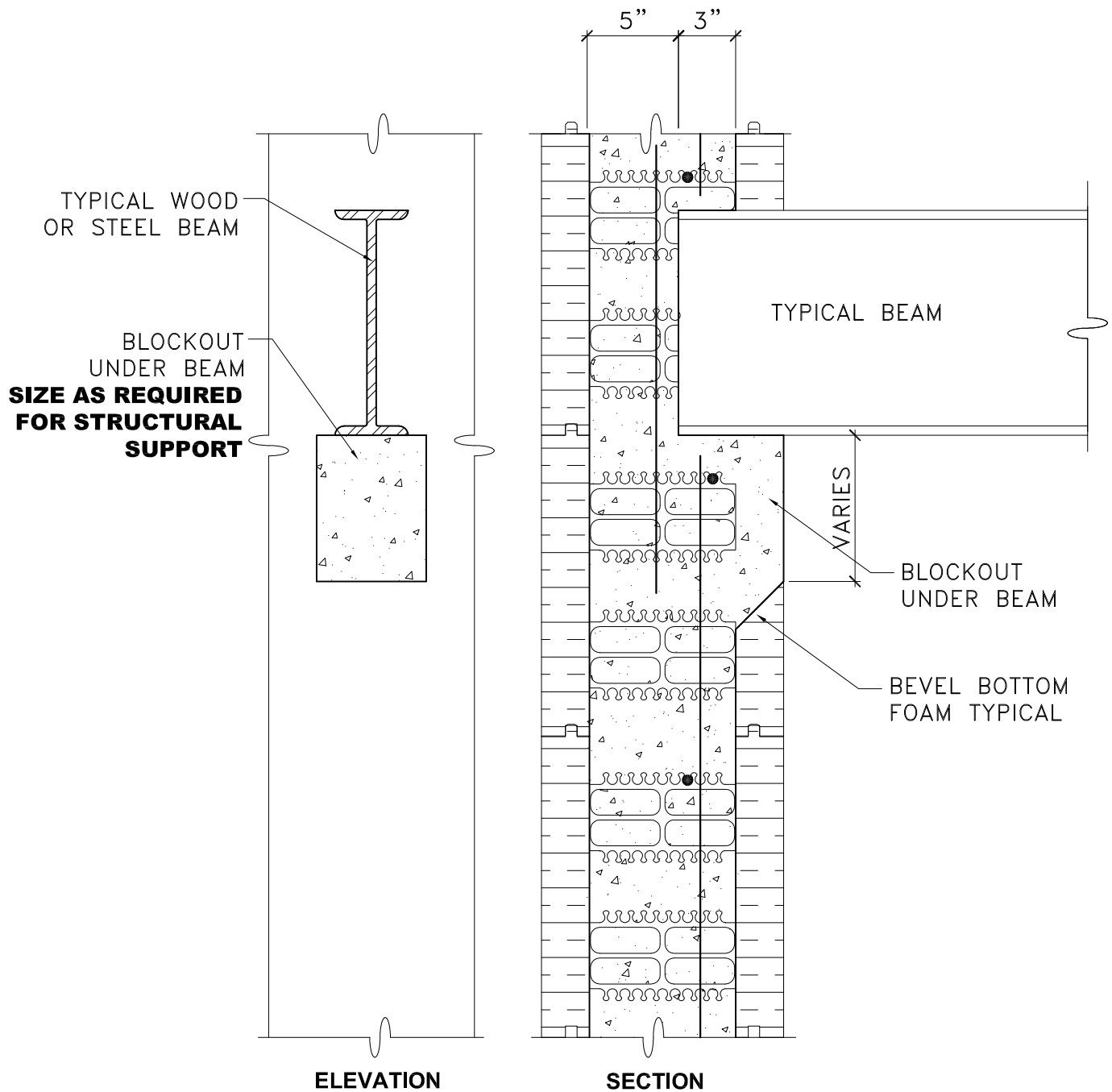
PLANT OR PROJECT 8" ADVANTAGE ICF SYSTEM

**BRICK ANGLE LEDGE
 DETAIL - INTERMEDIATE
 HEIGHT**

SCALE NTS

DESIGN G DOREN	DATE JULY, 09
DRAWN L XIE	DATE JULY, 09
CHECKED J WHALEN	DATE JULY, 09
DRAWING No.	REV.

D.5.8A



NOTE:

1. DETAIL TO BE USED IN CONJUNCTION WITH ADVANTAGE ICF SYSTEM TECHNICAL & INSTALLATION MANUAL
2. WOOD BEAMS MAY NEED TO BE PROTECTED SEE LOCAL BUILDING CODE OR FLOOR MANUFACTURER'S SPECIFICATIONS
3. ENGINEER TO CONFIRM BEARING CAPACITY REQUIRED FOR SPECIFIC BEAMS

No.	REVISION DESCRIPTION	DATE	BY	CHKD	APPD



PLANT OR PROJECT **8" ADVANTAGE ICF SYSTEM**

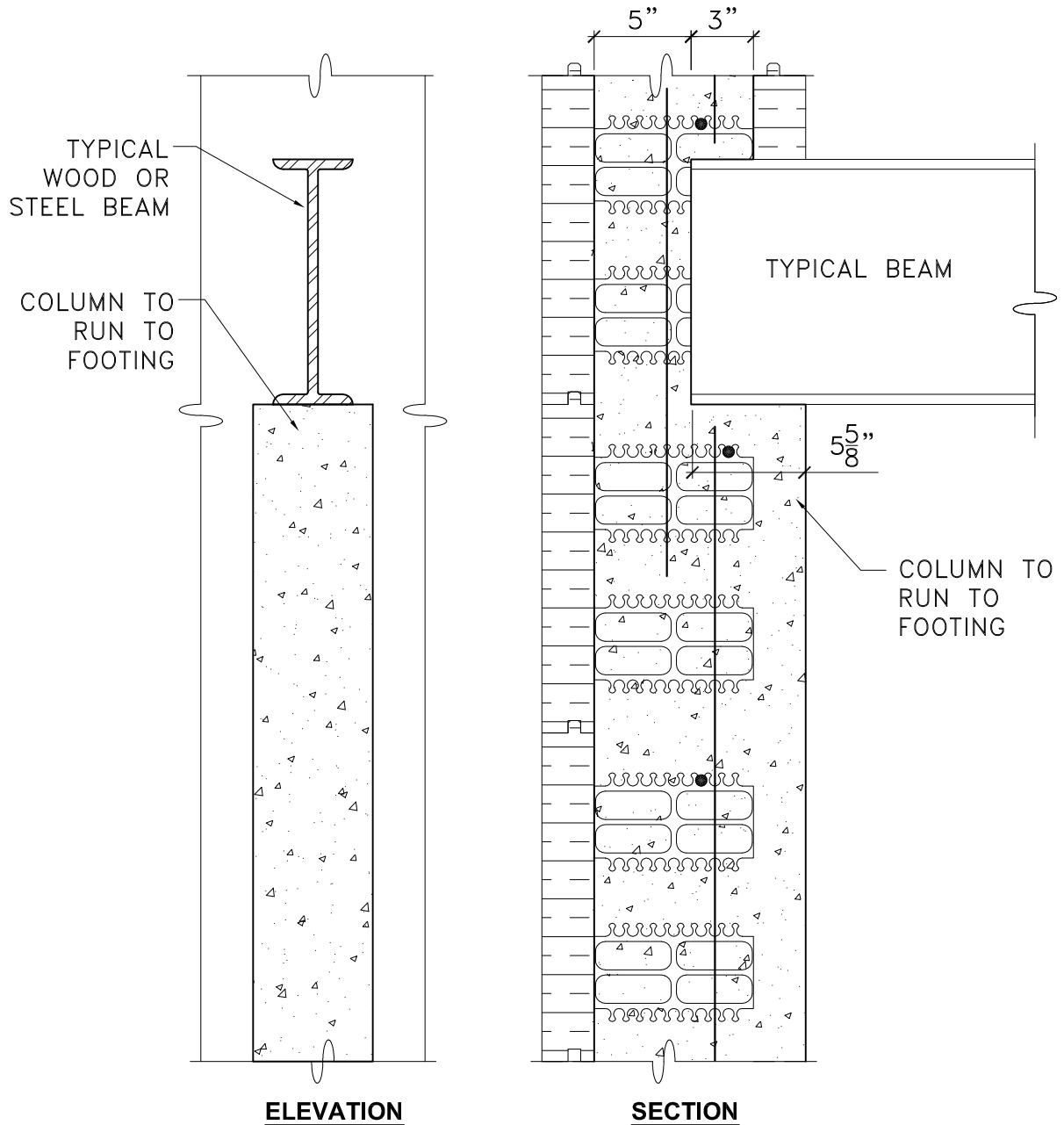
**BEAM POCKET
DETAILS**

SCALE **NTS**

DESIGN G DOREN	DATE JULY, 09
DRAWN L XIE	DATE JULY, 09
CHECKED J WHALEN	DATE JULY, 09
DRAWING No.	REV.

D.6.8

NOTE:
COLUMN DIMENSIONS AS REQUIRED BY ENGINEER



- NOTE:
1. DETAIL TO BE USED IN CONJUNCTION WITH ADVANTAGE ICF SYSTEM TECHNICAL & INSTALLATION MANUAL
 2. WOOD BEAMS MAY NEED TO BE PROTECTED SEE LOCAL BUILDING CODE OR FLOOR MANUFACTURER'S SPECIFICATIONS
 3. ENGINEER TO CONFIRM BEARING CAPACITY REQUIRED FOR SPECIFIC BEAMS

No.	REVISION DESCRIPTION	DATE	BY	CHKD	APPD



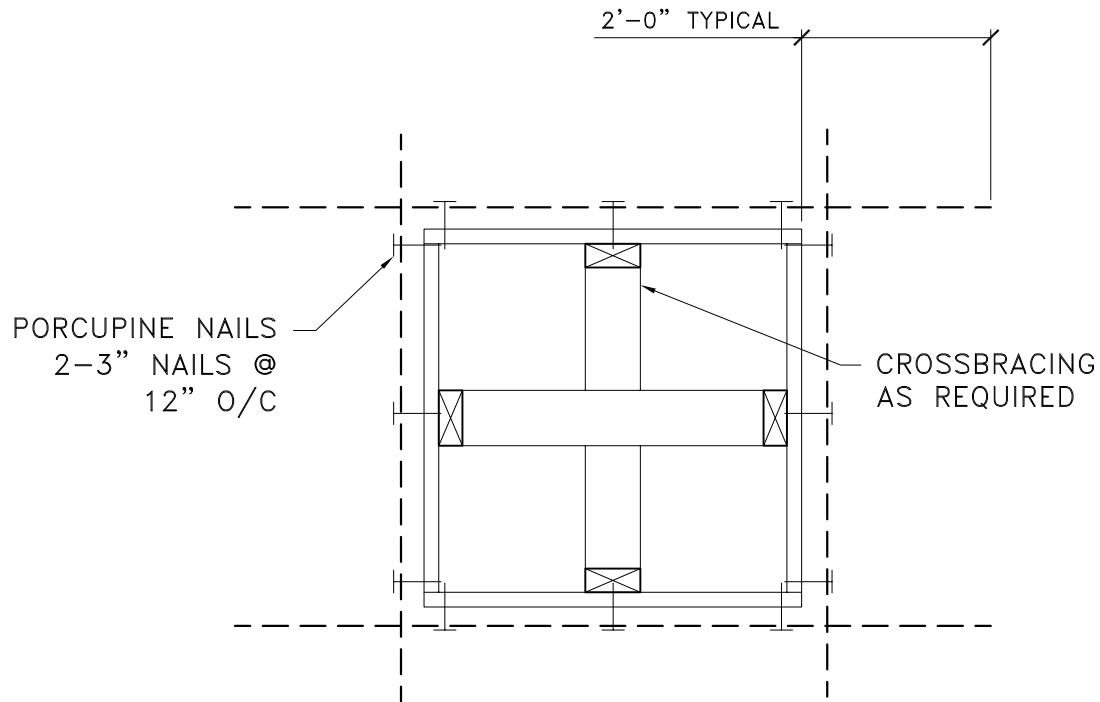
PLANT OR PROJECT 8" ADVANTAGE ICF SYSTEM

**FULL HEIGHT COLUMN
FOOTINGS TO
UNDERSIDE OF BEAM**

SCALE NTS

DESIGN G DOREN	DATE JULY, 09
DRAWN L XIE	DATE JULY, 09
CHECKED J WHALEN	DATE JULY, 09
DRAWING No.	REV.

D.7.8



NOTES:

1. WRAP BUCK TO ENSURE WOOD IS NOT IN DIRECT CONTACT WITH CONCRETE.
2. DETAIL TO BE USED IN CONJUNCTION WITH ADVANTAGE ICF SYSTEM TECHNICAL & INSTALLATION MANUAL
3. SEE TECHNICAL MANUAL FOR REINFORCING.

No.	REVISION DESCRIPTION	DATE	BY	CHKD	APPD



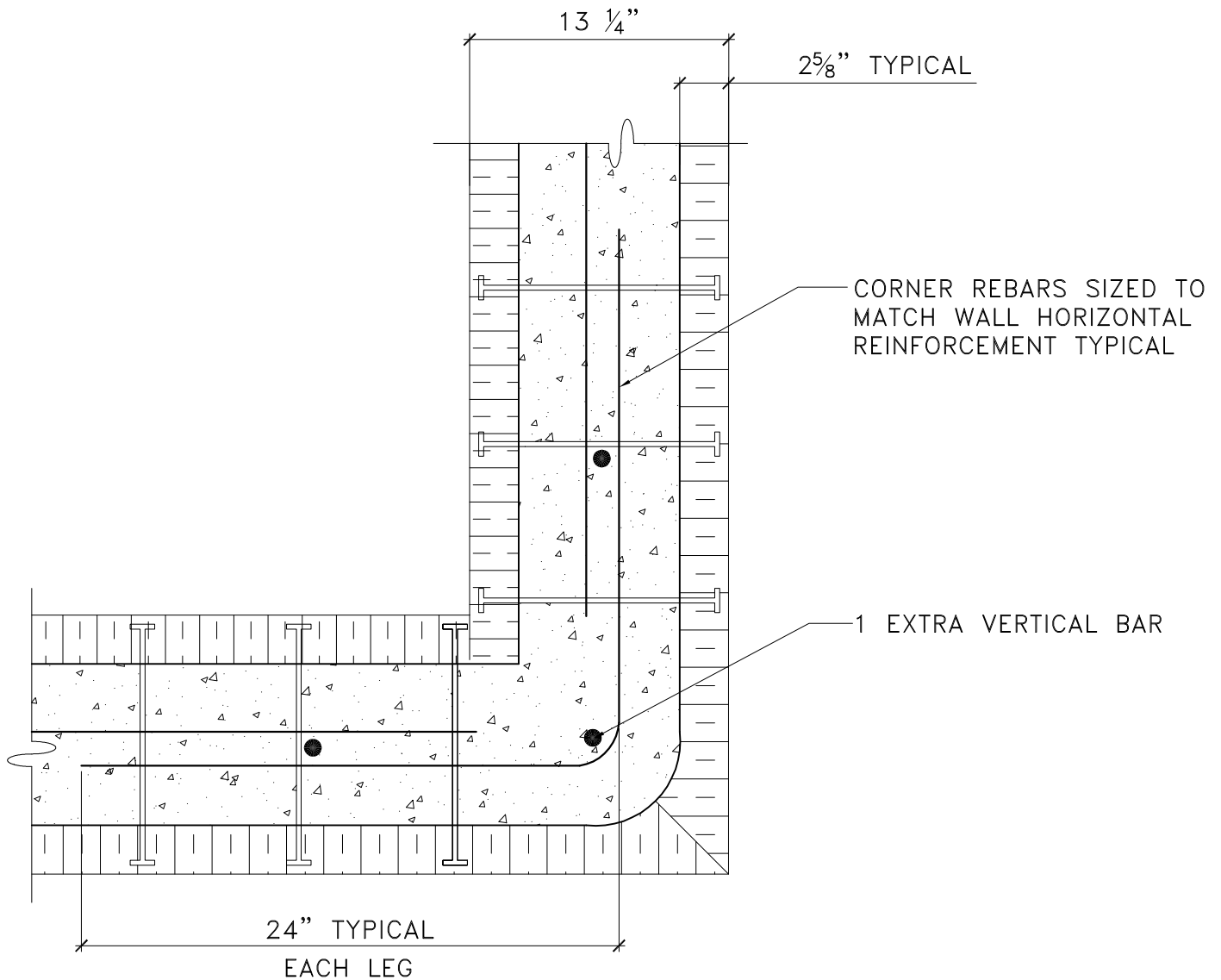
PLANT OR PROJECT 8" ADVANTAGE ICF SYSTEM

OPENING DETAIL

SCALE NTS

DESIGN G DOREN	DATE JULY, 09
DRAWN L XIE	DATE JULY, 09
CHECKED J WHALEN	DATE JULY, 09
DRAWING No.	REV.

D.8.8



NOTES:

1. DETAIL TO BE USED IN CONJUNCTION WITH ADVANTAGE ICF SYSTEM TECHNICAL & INSTALLATION MANUAL.
2. REBAR OVERLAP TO BE 450 MM (18") FOR 10M AND 650 MM (26") FOR 15M.
3. MULTI STRAPS INSTALLED PRIOR TO POUR AS PER INSTALLATION MANUAL.

No.	REVISION DESCRIPTION	DATE	BY	CHKD	APPD



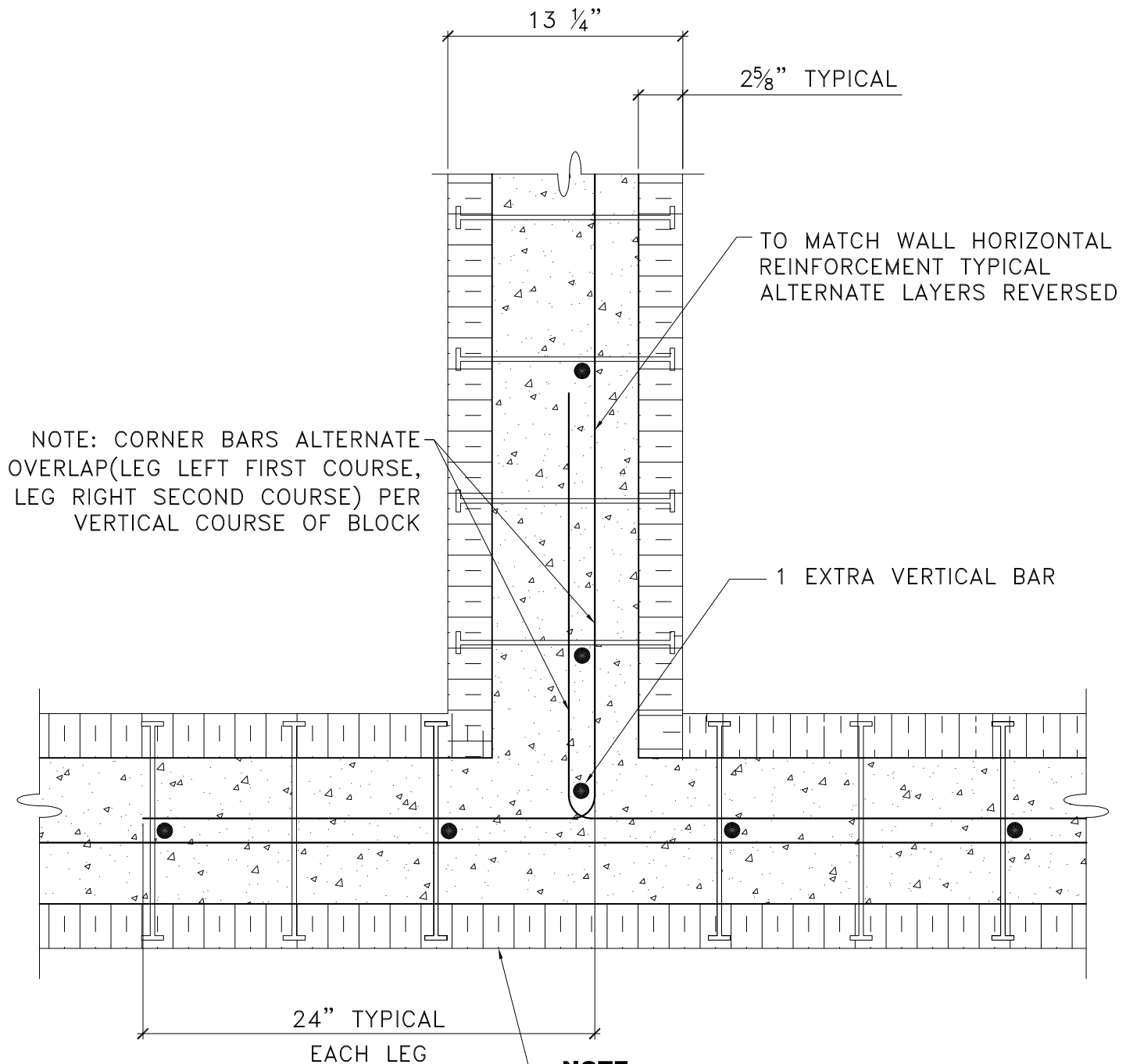
PLANT OR PROJECT 8" ADVANTAGE ICF SYSTEM

TYPICAL CORNER DETAIL

SCALE NTS

DESIGN G DOREN	DATE JULY, 09
DRAWN L XIE	DATE JULY, 09
CHECKED J WHALEN	DATE JULY, 09
DRAWING No.	REV.

D.9.8



NOTE:
**TEES REQUIRE EXTRA BRACING ON BACK
AND INSIDE CORNERS DURING CONCRETE
POUR SEE INSTALLATION MANUAL**

NOTE:
DETAIL TO BE USED IN CONJUNCTION WITH ADVANTAGE
ICF SYSTEM TECHNICAL & INSTALLATION MANUAL

No.	REVISION DESCRIPTION	DATE	BY	CHKD	APPD



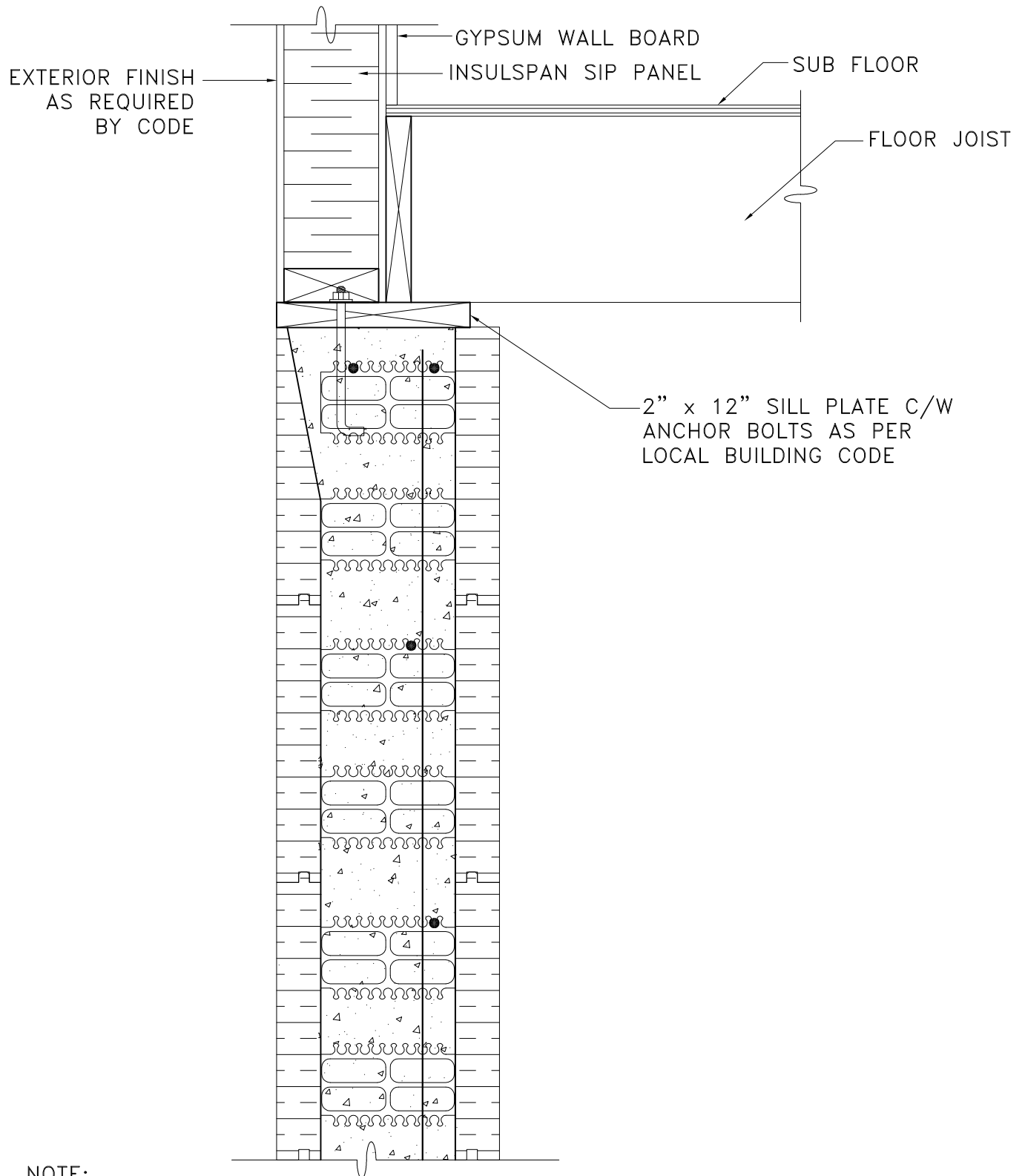
PLANT OR PROJECT 8" ADVANTAGE ICF SYSTEM

**TYPICAL "T"
INTERSECTION**

SCALE NTS

DESIGN G DOREN	DATE JULY, 09
DRAWN L XIE	DATE JULY, 09
CHECKED J WHALEN	DATE JULY, 09
DRAWING No.	REV.

D.10.8



NOTE:
 DETAIL TO BE USED IN CONJUNCTION WITH ADVANTAGE
 ICF SYSTEM TECHNICAL & INSTALLATION MANUAL

No.	REVISION DESCRIPTION	DATE	BY	CHKD	APPD



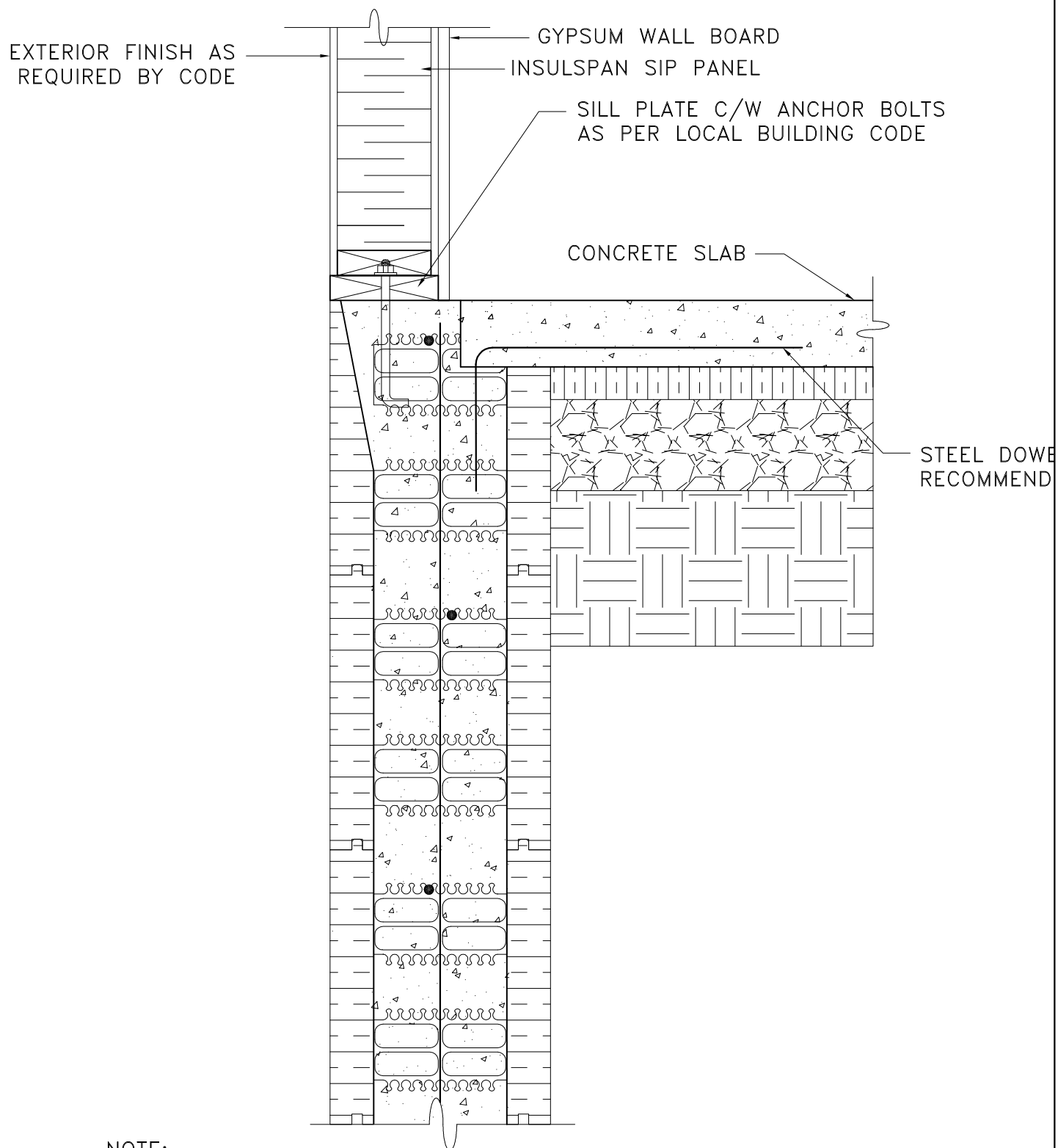
PLANT OR PROJECT 8" ADVANTAGE ICF SYSTEM

SIP WALL CONNECTION

SCALE NTS

DESIGN G DOREN	DATE JULY, 09
DRAWN L XIE	DATE JULY, 09
CHECKED J WHALEN	DATE JULY, 09
DRAWING No.	REV.

D.11.8



NOTE:
 DETAIL TO BE USED IN CONJUNCTION WITH ADVANTAGE
 ICF SYSTEM TECHNICAL & INSTALLATION MANUAL

No.	REVISION DESCRIPTION	DATE	BY	CHKD	APPD



PLANT OR PROJECT 8" ADVANTAGE ICF SYSTEM

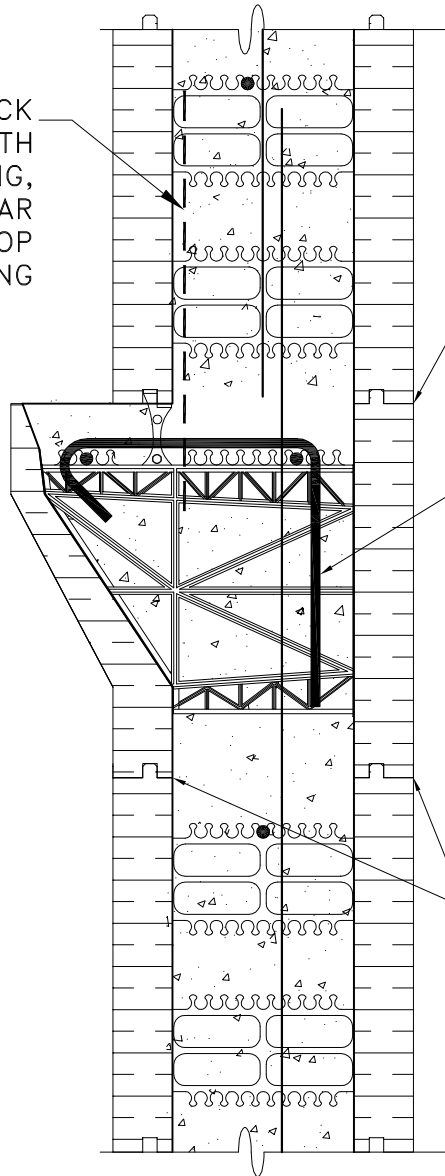
SIP WALL CONNECTION WITH CONCRETE SLAB

SCALE NTS

DESIGN G DOREN	DATE JULY, 09
DRAWN L XIE	DATE JULY, 09
CHECKED J WHALEN	DATE JULY, 09
DRAWING No.	REV.

D.12.8

TIE BLOCK ABOVE BRICK
LEDGE DOWN WITH
ADVANTAGE BANDING,
ZIP STRAP, OR REBAR
WIRE TO KEEP TOP
BLOCK FROM FLOATING



GLUE THESE JOINTS WITH
LOW EXPANSION FOAM
ADHESIVE CONTINUOUS

10M STIRRUP SEE TECHNICAL
MANUAL PAGE 8 OR PER
LOCAL ENGINEER

GLUE THESE JOINTS WITH
LOW EXPANSION FOAM
ADHESIVE CONTINUOUS

NOTE:

DETAIL TO BE USED IN CONJUNCTION WITH ADVANTAGE
ICF SYSTEM TECHNICAL & INSTALLATION MANUAL

No.	REVISION DESCRIPTION	DATE	BY	CHKD	APPD



PLANT OR
PROJECT 8" ADVANTAGE ICF SYSTEM

BRICK LEDGE DETAIL

SCALE NTS

DESIGN G DOREN	DATE JULY, 09
DRAWN L XIE	DATE JULY, 09
CHECKED J WHALEN	DATE JULY, 09
DRAWING No.	REV.

D.13.8

TIE BLOCK ABOVE BRICK
LEDGE DOWN WITH
ADVANTAGE BANDING,
ZIP STRAP, OR REBAR
WIRE TO KEEP TOP
BLOCK FROM FLOATING

2x4 TREATED
LEDGE PLATE
C/W BOLTS AS
PER LOCAL
BUILDING CODE

GLUE THESE JOINTS WITH
LOW EXPANSION FOAM
ADHESIVE CONTINUOUS

10M STIRRUP SEE TECHNICAL
MANUAL PAGE 8 OR PER
LOCAL ENGINEER

GLUE THESE JOINTS WITH
LOW EXPANSION FOAM
ADHESIVE CONTINUOUS

NOTE:
DETAIL TO BE USED IN CONJUNCTION WITH ADVANTAGE
ICF SYSTEM TECHNICAL & INSTALLATION MANUAL

No.	REVISION DESCRIPTION	DATE	BY	CHKD	APPD



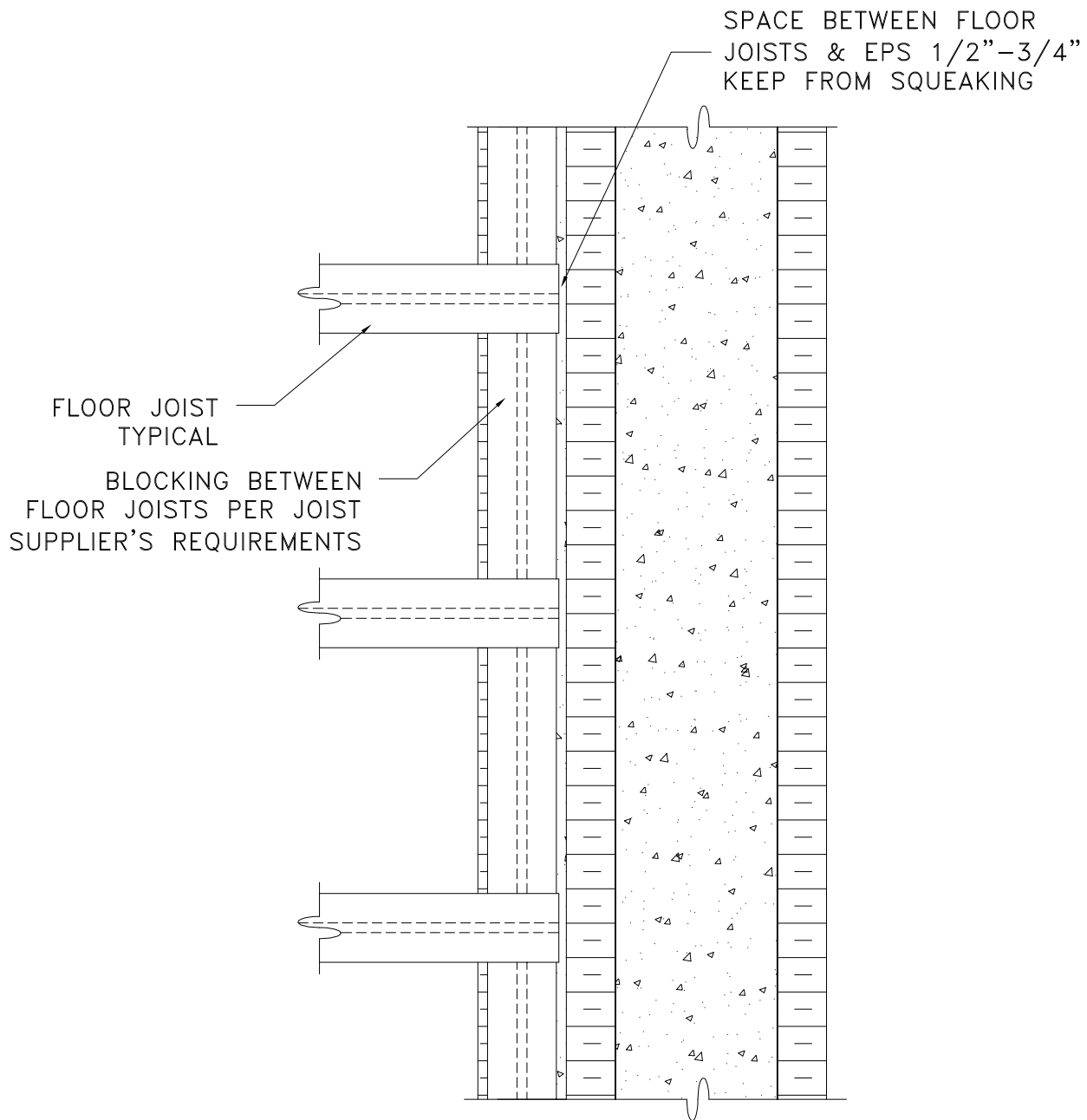
PLANT OR
PROJECT **8" ADVANTAGE ICF SYSTEM**

FLOOR LEDGE DETAIL

SCALE **NTS**

DESIGN G DOREN	DATE JULY, 09
DRAWN L XIE	DATE JULY, 09
CHECKED J WHALEN	DATE JULY, 09
DRAWING No.	REV.

D.14.8



NOTE:
FOR USE WITH DETAIL D.14.8

NOTE:
FASTEN FLOOR JOISTS TO 2x SILL PLATE AS PER LOCAL BUILDING CODE REQUIREMENTS

NOTE:
DETAIL TO BE USED IN CONJUNCTION WITH ADVANTAGE ICF SYSTEM TECHNICAL & INSTALLATION MANUAL

No.	REVISION DESCRIPTION	DATE	BY	CHKD	APPD

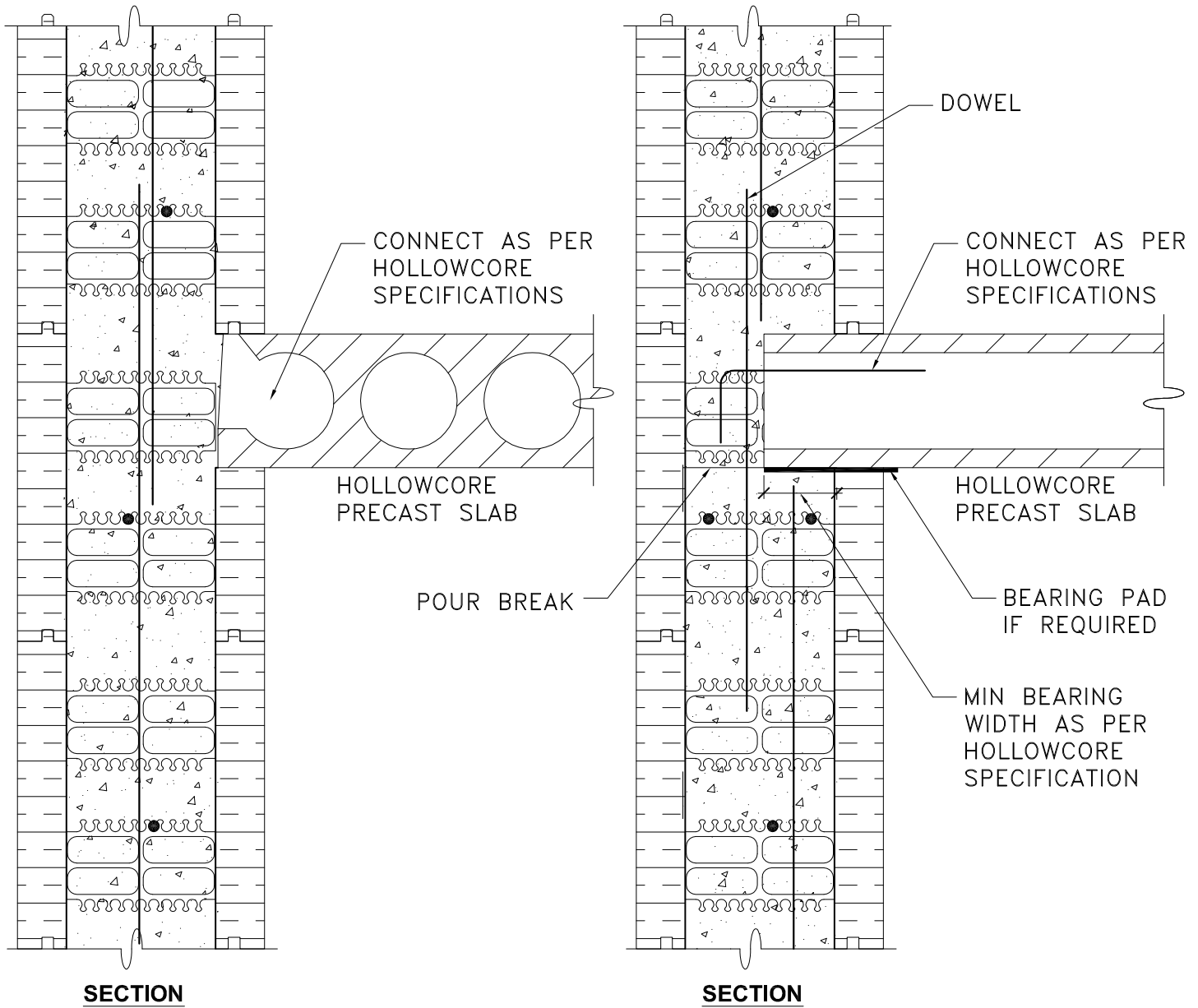


PLANT OR PROJECT 8" ADVANTAGE ICF SYSTEM

FLOOR LEDGE DETAIL PLAN VIEW

SCALE NTS

DESIGN G DOREN	DATE JULY, 09
DRAWN L XIE	DATE JULY, 09
CHECKED J WHALEN	DATE JULY, 09
DRAWING No.	REV.
D.14.8A	

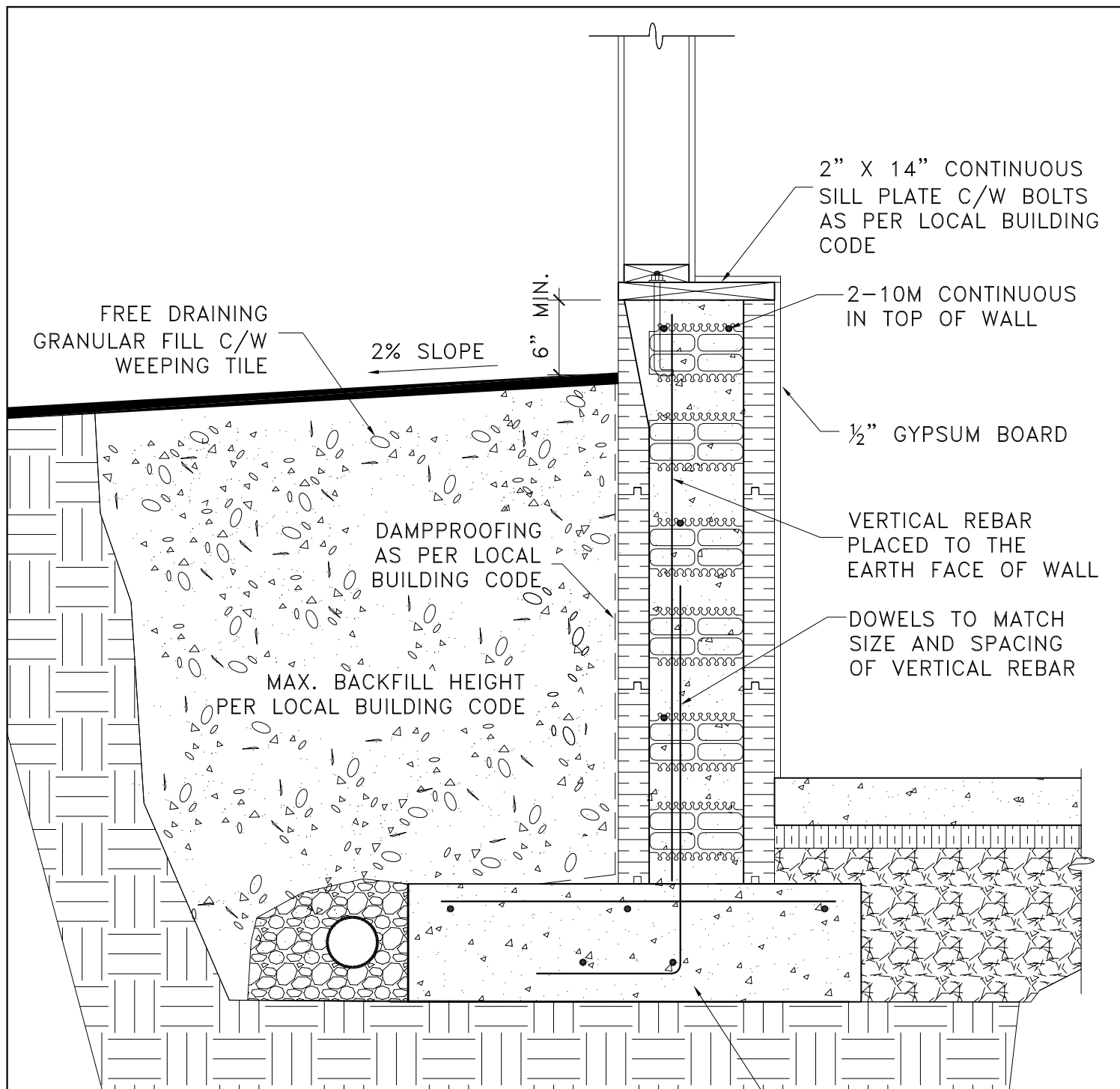


NOTE:
 DETAIL TO BE USED IN CONJUNCTION WITH ADVANTAGE ICF
 SYSTEM TECHNICAL & INSTALLATION MANUAL

No.	REVISION DESCRIPTION	DATE	BY	CHKD	APPD



PLANT OR PROJECT	8" ADVANTAGE ICF SYSTEM	SCALE	NTS
PRECAST CONCRETE FLOOR DETAIL		DESIGN	DATE
		G DOREN	JULY, 09
		DRAWN	DATE
		L XIE	JULY, 09
		CHECKED	DATE
		J WHALEN	JULY, 09
		DRAWING No.	REV.
		D.15.8	



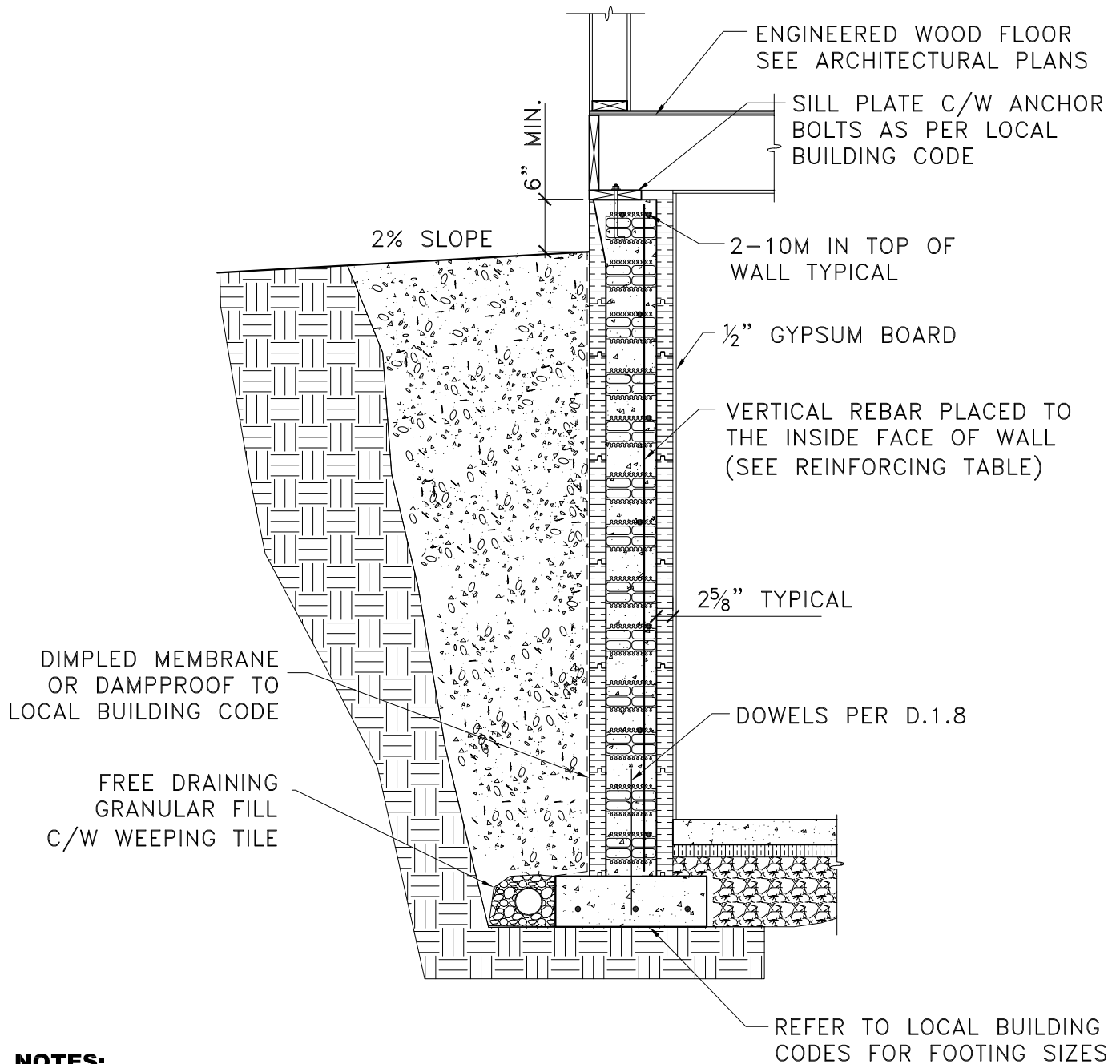
NOTES:

1. ENSURE APPROPRIATE FROST COVER.
2. THIS IS A Laterally UNSUPPORTED WALL. REFER TO LOCAL BUILDING CODES.
3. DETAIL TO BE USED IN CONJUNCTION WITH ADVANTAGE ICF SYSTEM TECHNICAL & INSTALLATION MANUAL.
4. HORIZONTAL AND VERTICAL REBAR OVERLAP TO BE 450 mm (18") FOR 10M AND 650 mm (26") FOR 15M.

No.	REVISION DESCRIPTION	DATE	BY	CHKD	APPD



PLANT OR PROJECT	8" ADVANTAGE ICF SYSTEM	SCALE	NTS
KNEE OR PONY WALL		DESIGN	DATE
		G DOREN	JULY, 09
		DRAWN	DATE
		L XIE	JULY, 09
		CHECKED	DATE
		J WHALEN	JULY, 09
DRAWING No.		REV.	
S.1.8			



NOTES:

1. DETAIL TO BE USED IN CONJUNCTION WITH ADVANTAGE ICF SYSTEM TECHNICAL & INSTALLATION MANUAL.
2. HORIZONTAL AND VERTICAL REBAR OVERLAP TO BE 450 mm (18") FOR 10M AND 650 mm (26") FOR 15M.

No.	REVISION DESCRIPTION	DATE	BY	CHKD	APPD



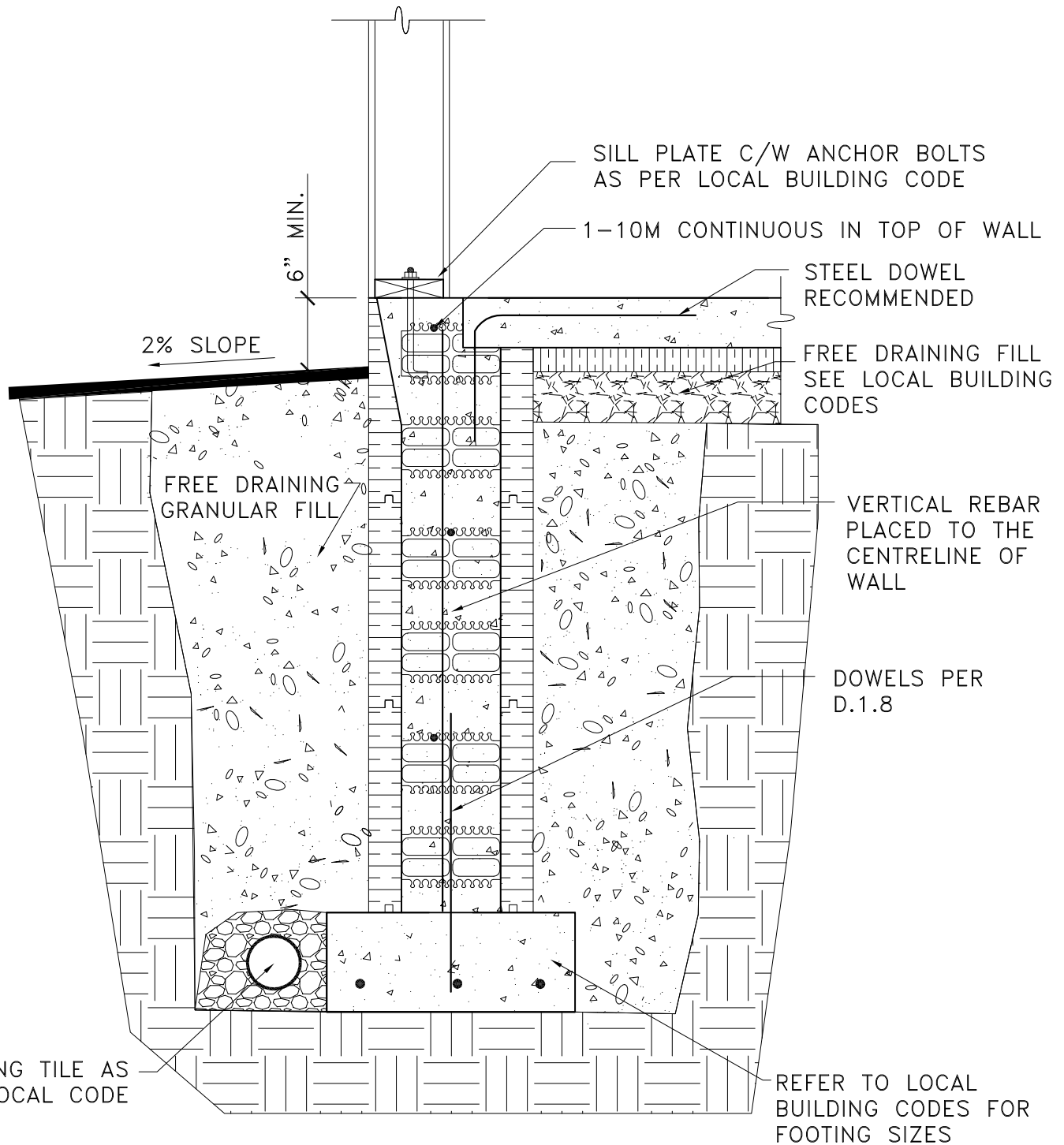
PLANT OR PROJECT 8" ADVANTAGE ICF SYSTEM

FOUNDATION AND
WOOD STUD MAIN

SCALE NTS

DESIGN G DOREN	DATE JULY, 09
DRAWN L XIE	DATE JULY, 09
CHECKED J WHALEN	DATE JULY, 09
DRAWING No.	REV.

S.3.8



NOTES:

- 1. DETAIL TO BE USED IN CONJUNCTION WITH ADVANTAGE ICF SYSTEM TECHNICAL & INSTALLATION MANUAL.**
- 2. HORIZONTAL AND VERTICAL REBAR OVERLAP TO BE 450 mm (18") FOR 10M AND 650 mm (26") FOR 15M.**

No.	REVISION DESCRIPTION	DATE	BY	CHKD	APPD



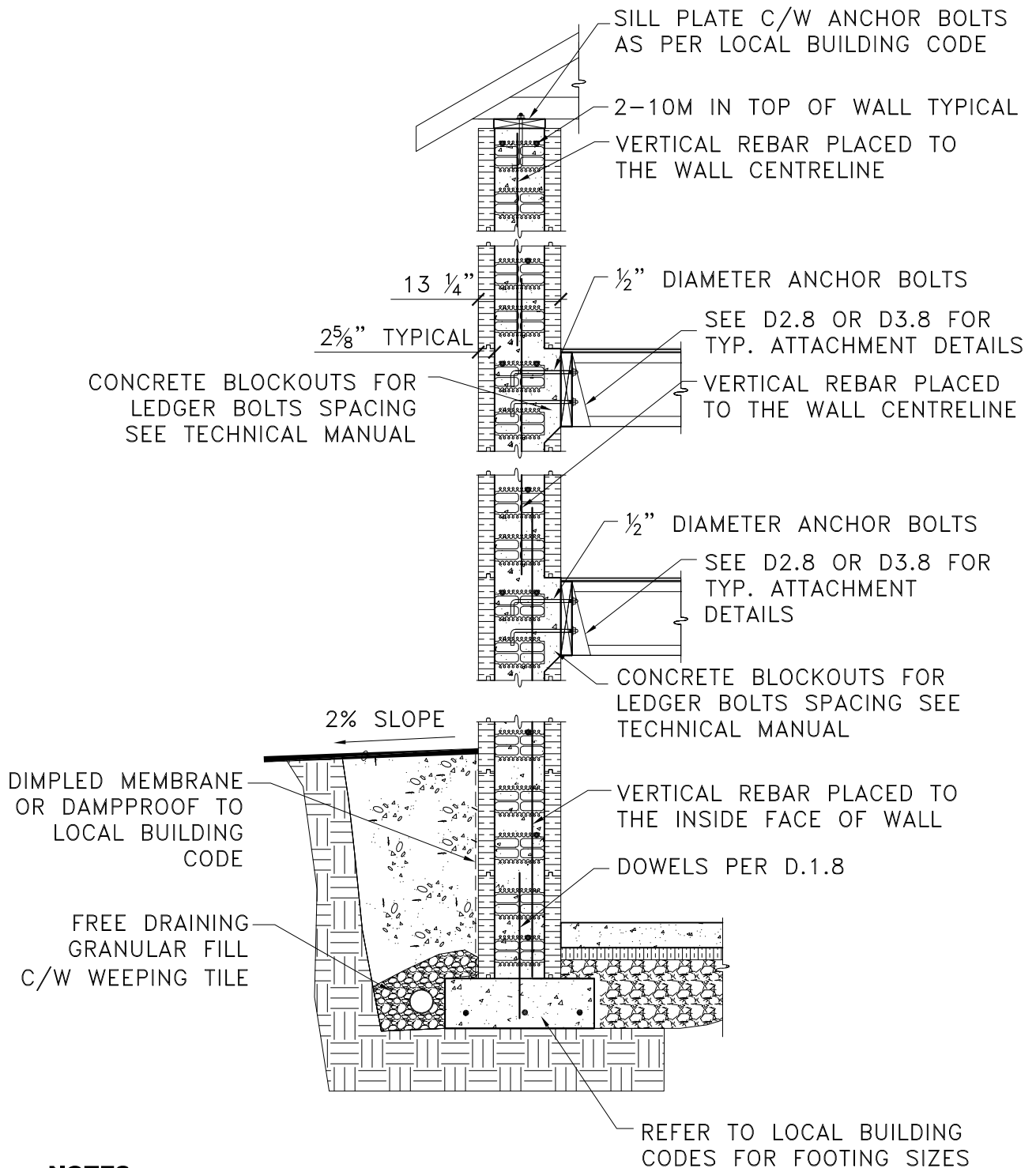
PLANT OR PROJECT 8" ADVANTAGE ICF SYSTEM

FROST WALL

SCALE NTS

DESIGN G DOREN	DATE JULY, 09
DRAWN L XIE	DATE JULY, 09
CHECKED J WHALEN	DATE JULY, 09
DRAWING No.	REV.

S.4.8



NOTES:

1. DETAIL TO BE USED IN CONJUNCTION WITH ADVANTAGE ICF SYSTEM TECHNICAL & INSTALLATION MANUAL.

2. HORIZONTAL AND VERTICAL REBAR OVERLAP TO BE 450 mm (18") FOR 10M AND 650 mm (26") FOR 15M.

No.	REVISION DESCRIPTION	DATE	BY	CHKD	APPD



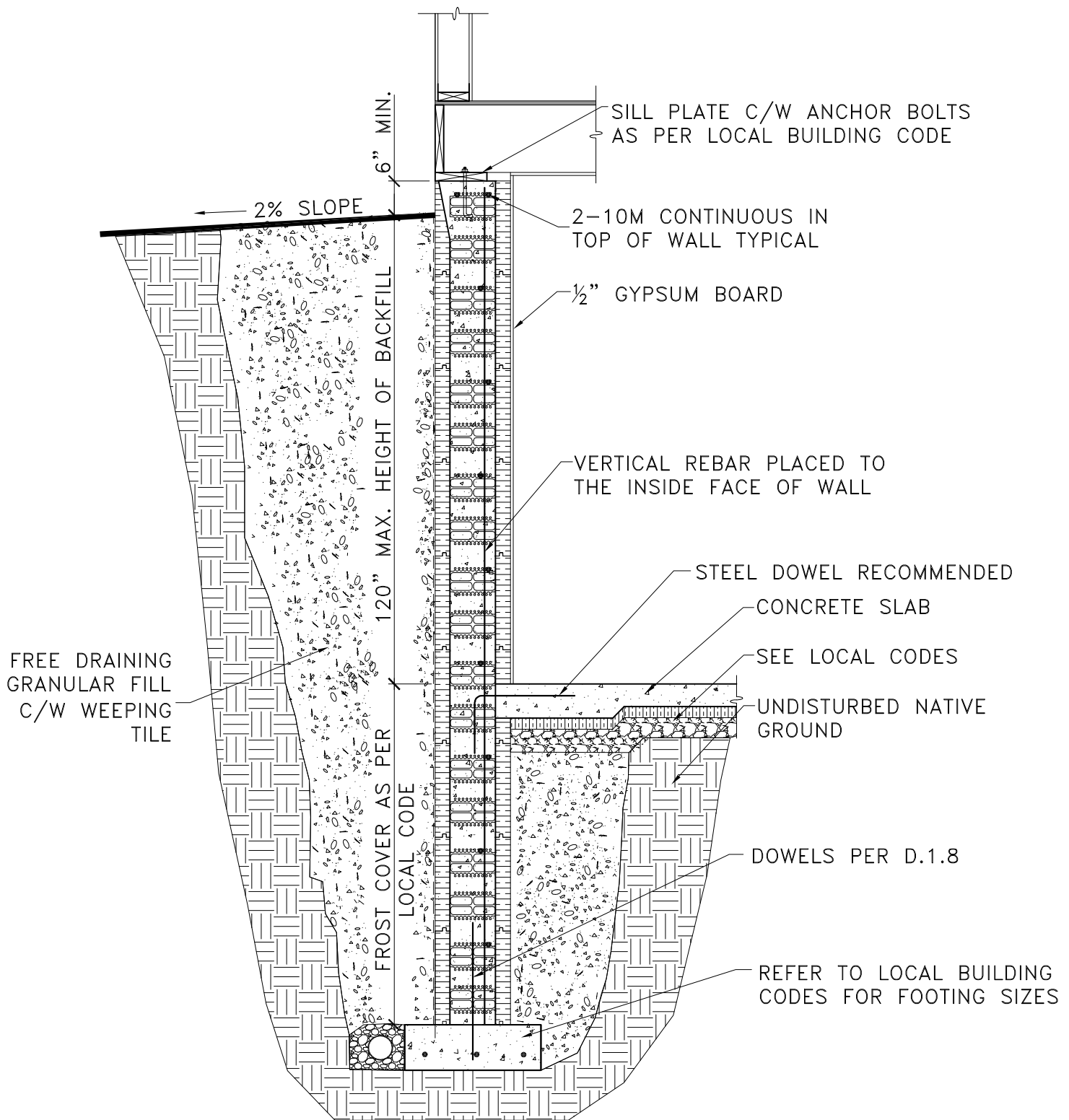
PLANT OR PROJECT 8" ADVANTAGE ICF SYSTEM

FOUNDATION, MAIN,
2ND FLOOR

SCALE NTS

DESIGN G DOREN	DATE JULY, 09
DRAWN L XIE	DATE JULY, 09
CHECKED J WHALEN	DATE JULY, 09
DRAWING No.	REV.

S.5.8



NOTES:

- 1. DETAIL TO BE USED IN CONJUNCTION WITH ADVANTAGE ICF SYSTEM TECHNICAL & INSTALLATION MANUAL.**
- 2. HORIZONTAL AND VERTICAL REBAR OVERLAP TO BE 450 mm (18") FOR 10M AND 650 mm (26") FOR 15M.**

No.	REVISION DESCRIPTION	DATE	BY	CHKD	APPD



PLANT OR PROJECT 8" ADVANTAGE ICF SYSTEM

FULL HEIGHT FROST WALL

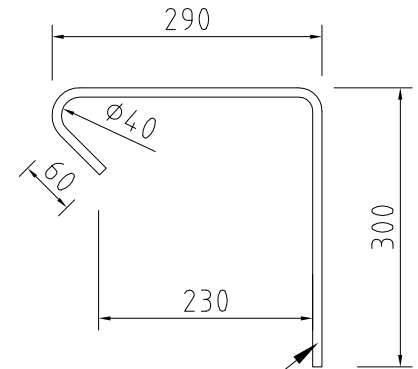
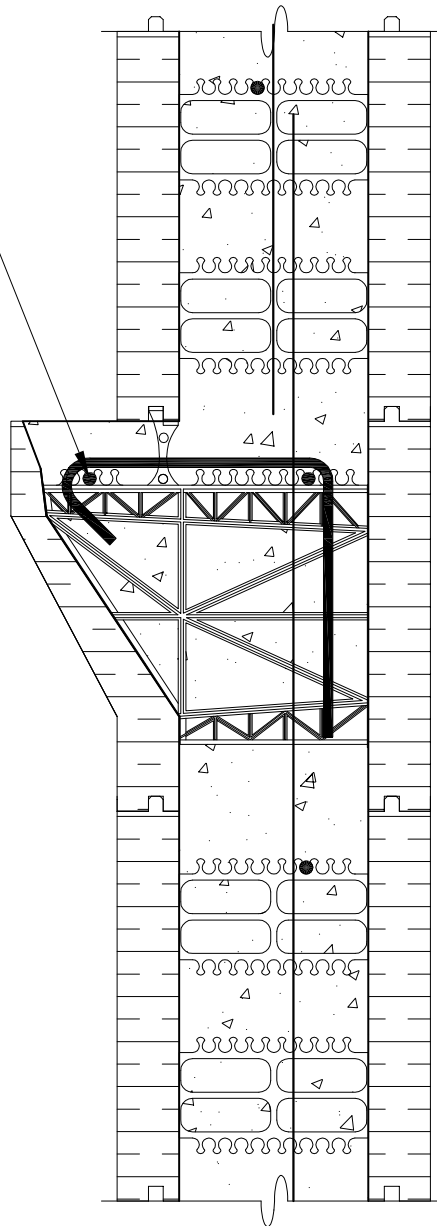
SCALE NTS

DESIGN G DOREN	DATE JULY, 09
DRAWN L XIE	DATE JULY, 09
CHECKED J WHALEN	DATE JULY, 09
DRAWING No.	REV.

S.6.8

BRICK LEDGE
FACTORED DESIGN
LOAD: 16 KN/m

1-10M CONT. EXTRA
IN BRICK LEDGE



10M @
203 mm
(8") o.c.

NOTES:

- 1. DETAIL TO BE USED IN CONJUNCTION WITH ADVANTAGE ICF SYSTEM TECHNICAL & INSTALLATION MANUAL.**
- 2. HORIZONTAL AND VERTICAL REBAR OVERLAP TO BE 450 mm (18") FOR 10M AND 650 mm (26") FOR 15M.**

No.	REVISION DESCRIPTION	DATE	BY	CHKD	APPD



PLANT OR PROJECT 8" ADVANTAGE ICF SYSTEM

**BRICK LEDGE DETAIL
8" TO 8" WALLS**

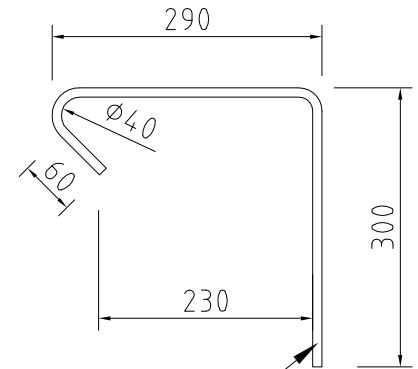
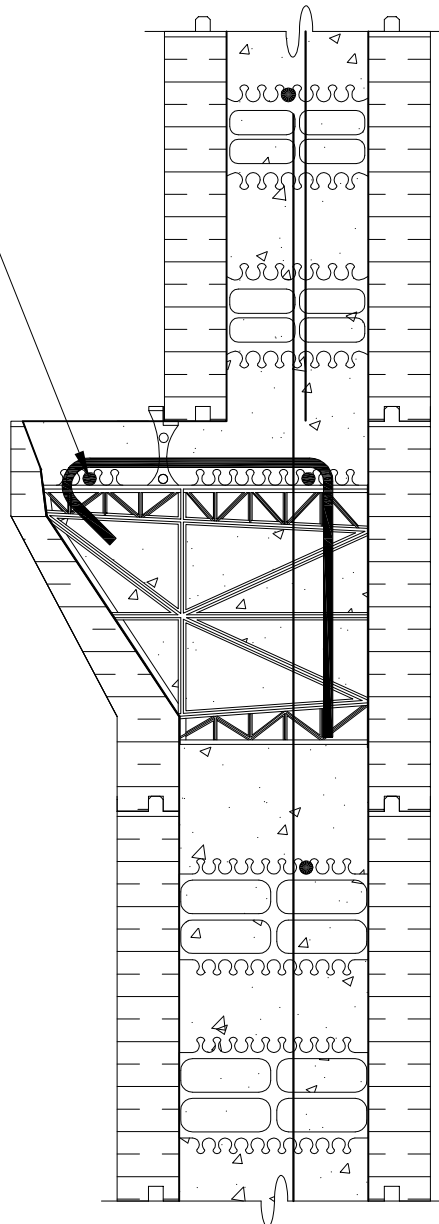
SCALE NTS

DESIGN G DOREN	DATE JULY, 09
DRAWN L XIE	DATE JULY, 09
CHECKED J WHALEN	DATE JULY, 09
DRAWING No.	REV.

S.7.8

BRICK LEDGE
FACTORED DESIGN
LOAD: 16 KN/m

1-10M CONT. EXTRA
IN BRICK LEDGE



10M @
203 mm
(8") o.c.

NOTES:

- 1. DETAIL TO BE USED IN CONJUNCTION WITH ADVANTAGE ICF SYSTEM TECHNICAL & INSTALLATION MANUAL.**
- 2. HORIZONTAL AND VERTICAL REBAR OVERLAP TO BE 450 mm (18") FOR 10M AND 650 mm (26") FOR 15M.**

No.	REVISION DESCRIPTION	DATE	BY	CHKD	APPD



PLANT OR PROJECT 8" ADVANTAGE ICF SYSTEM

**BRICK LEDGE DETAIL
8" TO 6" WALLS**

SCALE NTS

DESIGN G DOREN	DATE JULY, 09
DRAWN L XIE	DATE JULY, 09
CHECKED J WHALEN	DATE JULY, 09
DRAWING No.	REV.

S.7.8A