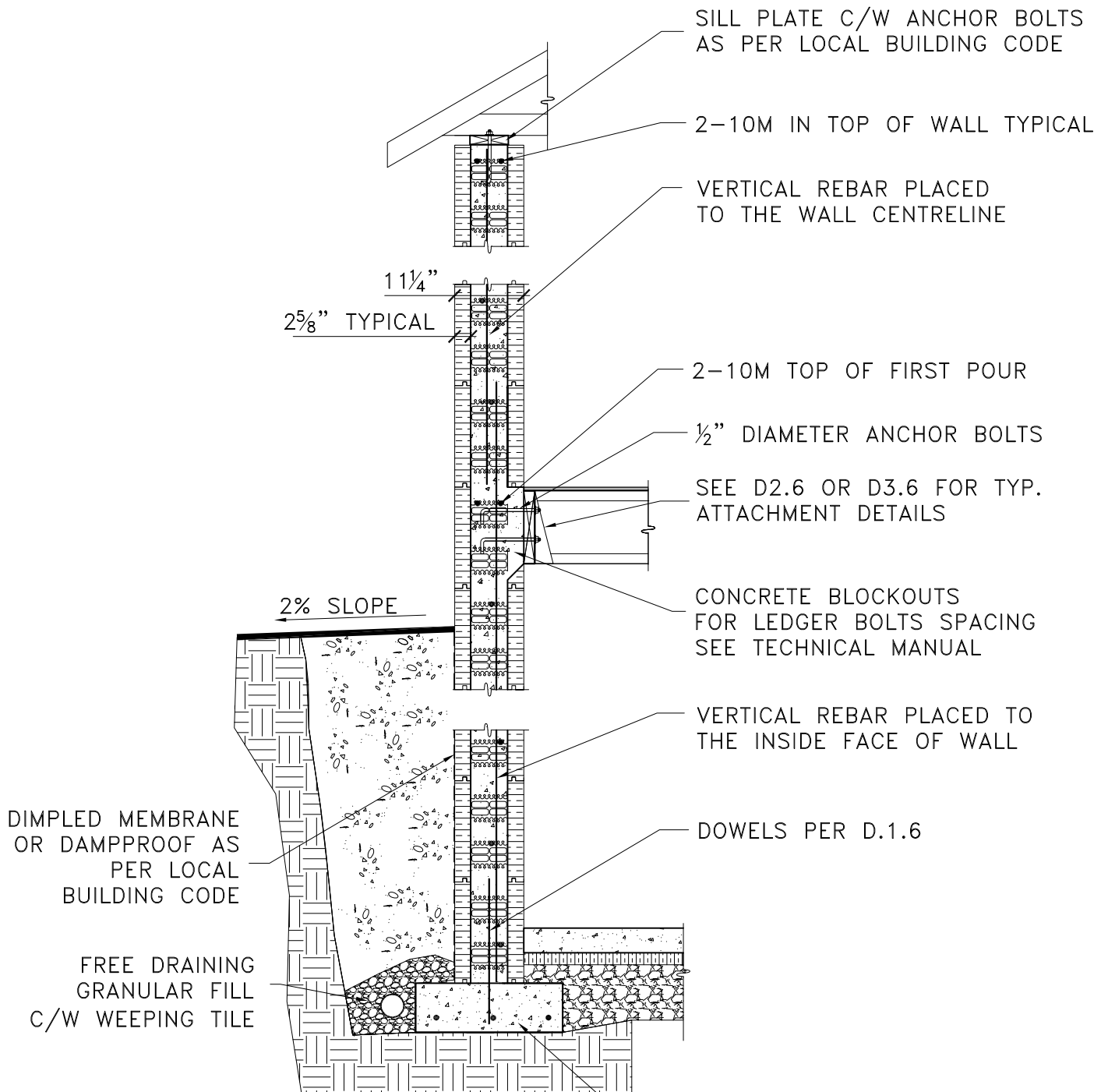


# Advantage ICF System Design Manual

## 6 Inch ICF Foundation & Main Floor



*Better building ideas from PFB* 



**NOTES:**

**1. DETAIL TO BE USED IN CONJUNCTION WITH ADVANTAGE ICF SYSTEM TECHNICAL & INSTALLATION MANUAL.**

**2. HORIZONTAL AND VERTICAL REBAR OVERLAP TO BE 450 mm (18") FOR 10M AND 650 mm (26") FOR 15M.**

REFER TO LOCAL BUILDING CODES FOR FOOTING SIZES

No.	REVISION DESCRIPTION	DATE	BY	CHKD	APPD



PLANT OR PROJECT 6" ADVANTAGE ICF SYSTEM

**FOUNDATION AND MAIN FLOOR**

SCALE NTS

DESIGN G DOREN	DATE JULY, 09
DRAWN L XIE	DATE JULY, 09
CHECKED J WHALEN	DATE JULY, 09
DRAWING No.	REV.

**S.2.6**