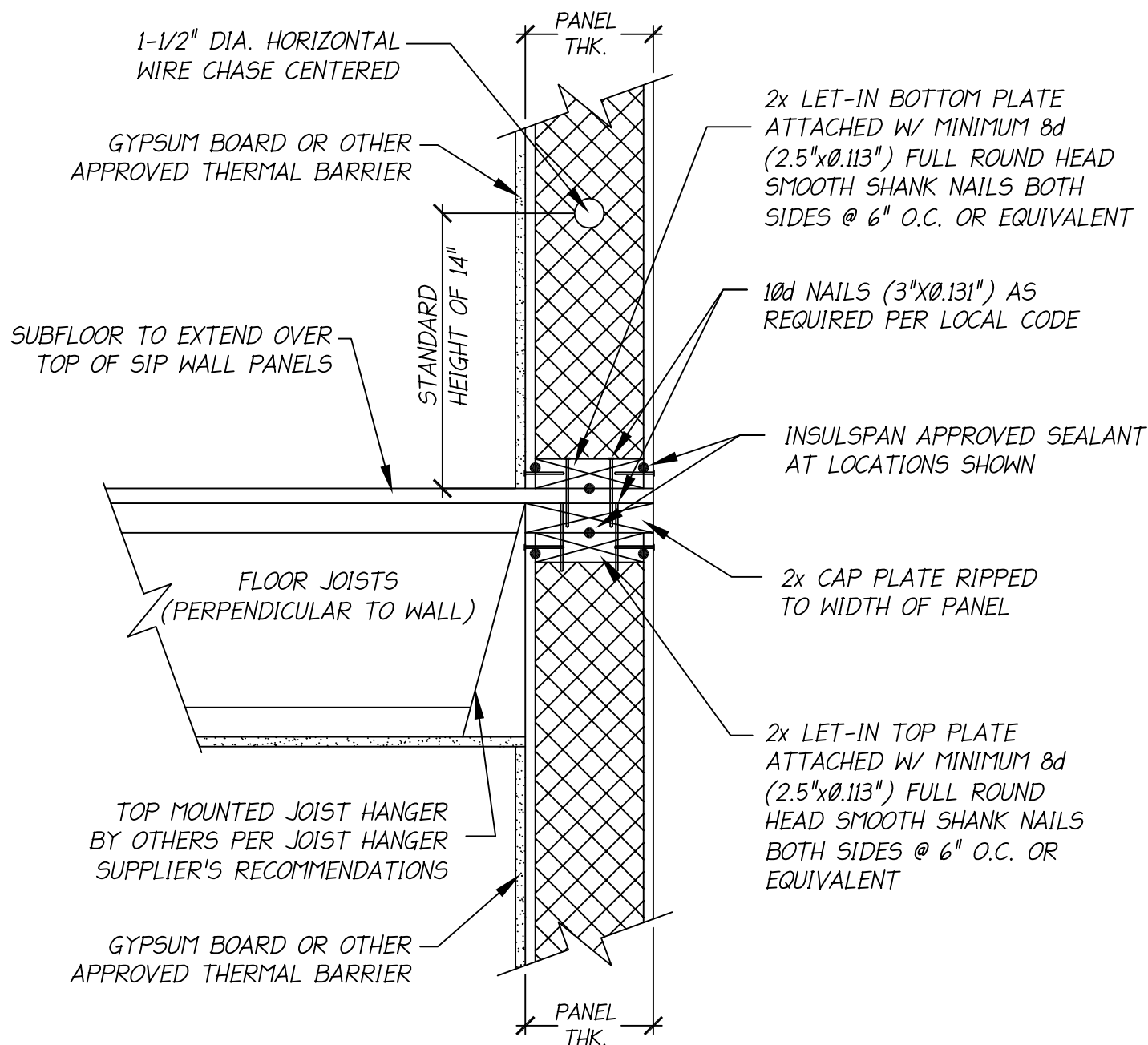


# Insulspan SIP System Design Manual

## Wall to Upper Floor Assembly Details





NOTES:

1. THE DETAIL IS TO BE USED WITH INSULSPAN CONSTRUCTION DRAWINGS AND INSTALLATION GUIDE. REFER TO INSULSPAN CONSTRUCTION DRAWINGS FOR FINAL NAIL AND SCREW SCHEDULES.
2. ALL BUILDING COMPONENTS USED IN CONJUNCTION WITH THIS DETAIL SHALL BE IN COMPLIANCE WITH LOCAL CODE REQUIREMENTS.

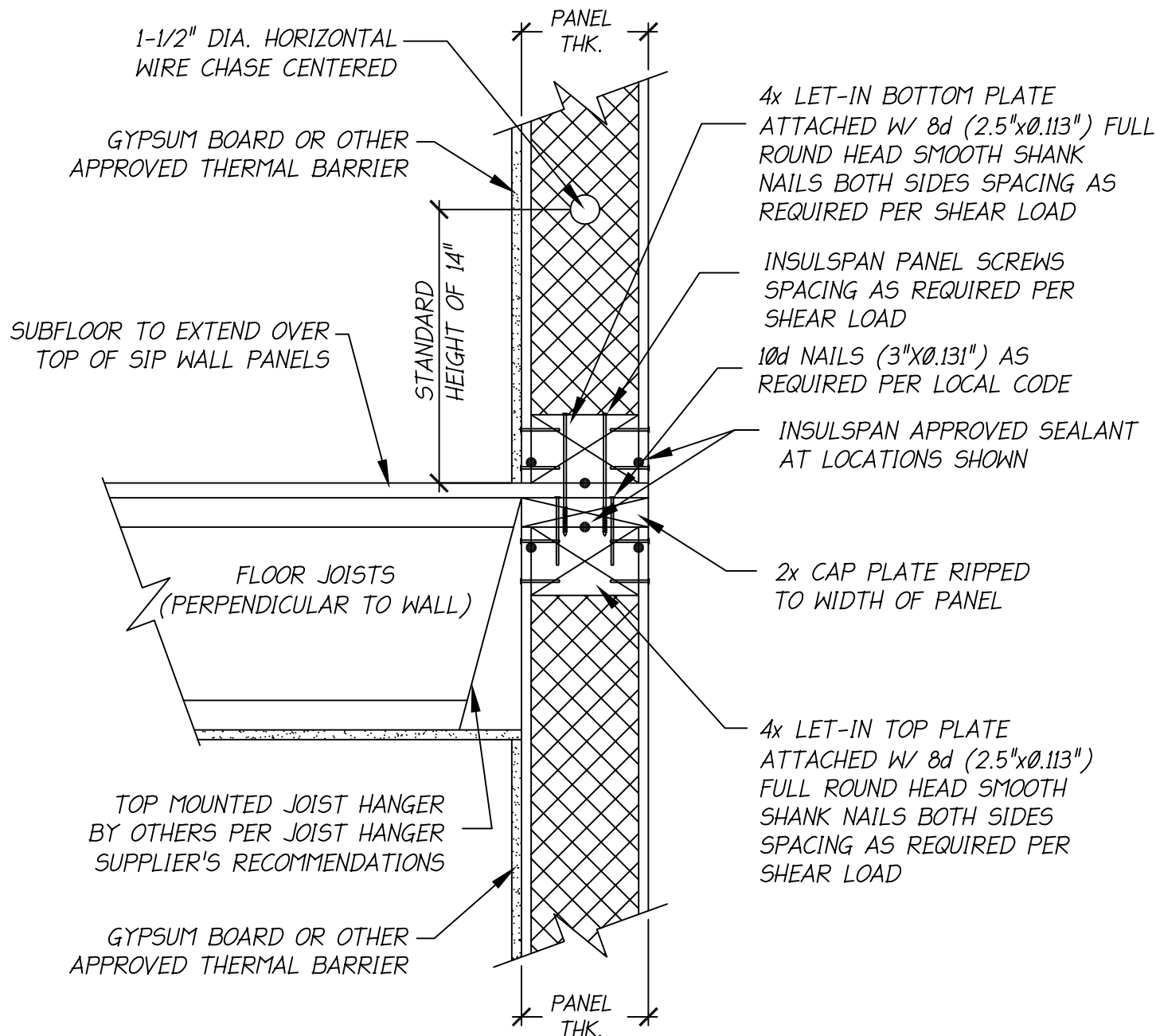
**INSULSPAN**  
STRUCTURAL INSULATING PANEL SYSTEM

**SIP WALL/FLOOR/JOIST HANGER**

SCALE: N.T.S.

LAST UPDATE: OCT 24, 2013

200.01



**NOTES:**

1. THE DETAIL IS TO BE USED WITH INSULSPAN CONSTRUCTION DRAWINGS AND INSTALLATION GUIDE. REFER TO INSULSPAN CONSTRUCTION DRAWINGS FOR FINAL NAIL AND SCREW SCHEDULES.
2. ALL BUILDING COMPONENTS USED IN CONJUNCTION WITH THIS DETAIL SHALL BE IN COMPLIANCE WITH LOCAL CODE REQUIREMENTS.

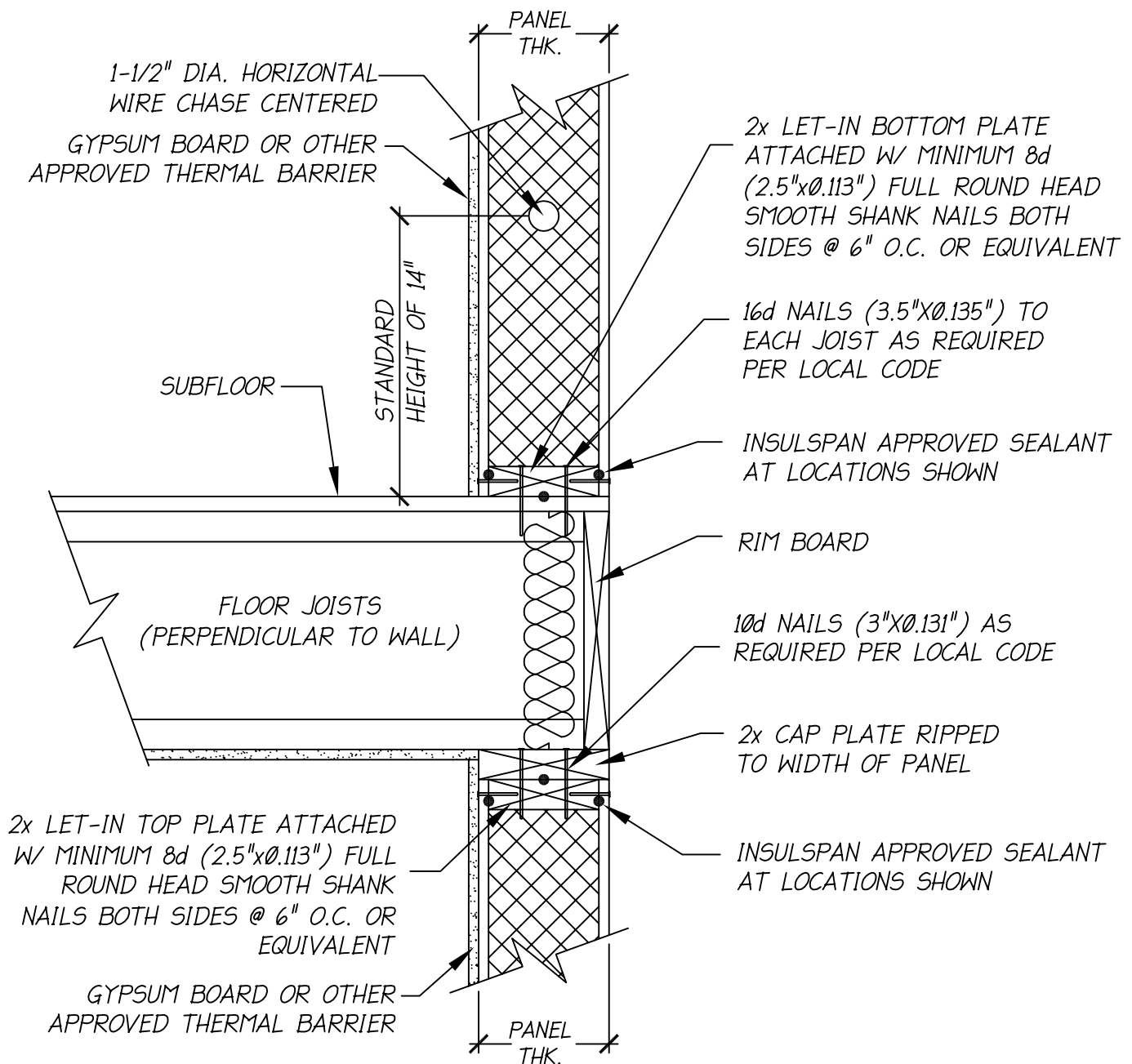
**INSULSPAN**  
STRUCTURAL INSULATING PANEL SYSTEM

**SIP WALL/FLOOR/JOIST HANGER**

SCALE: N.T.S.

LAST UPDATE: OCT 24, 2013

200.01A



**NOTES:**

1. THE DETAIL IS TO BE USED WITH INSULSPAN CONSTRUCTION DRAWINGS AND INSTALLATION GUIDE.  
REFER TO INSULSPAN CONSTRUCTION DRAWINGS FOR FINAL NAIL AND SCREW SCHEDULES.
2. ALL BUILDING COMPONENTS USED IN CONJUNCTION WITH THIS DETAIL SHALL BE IN COMPLIANCE WITH LOCAL CODE REQUIREMENTS.

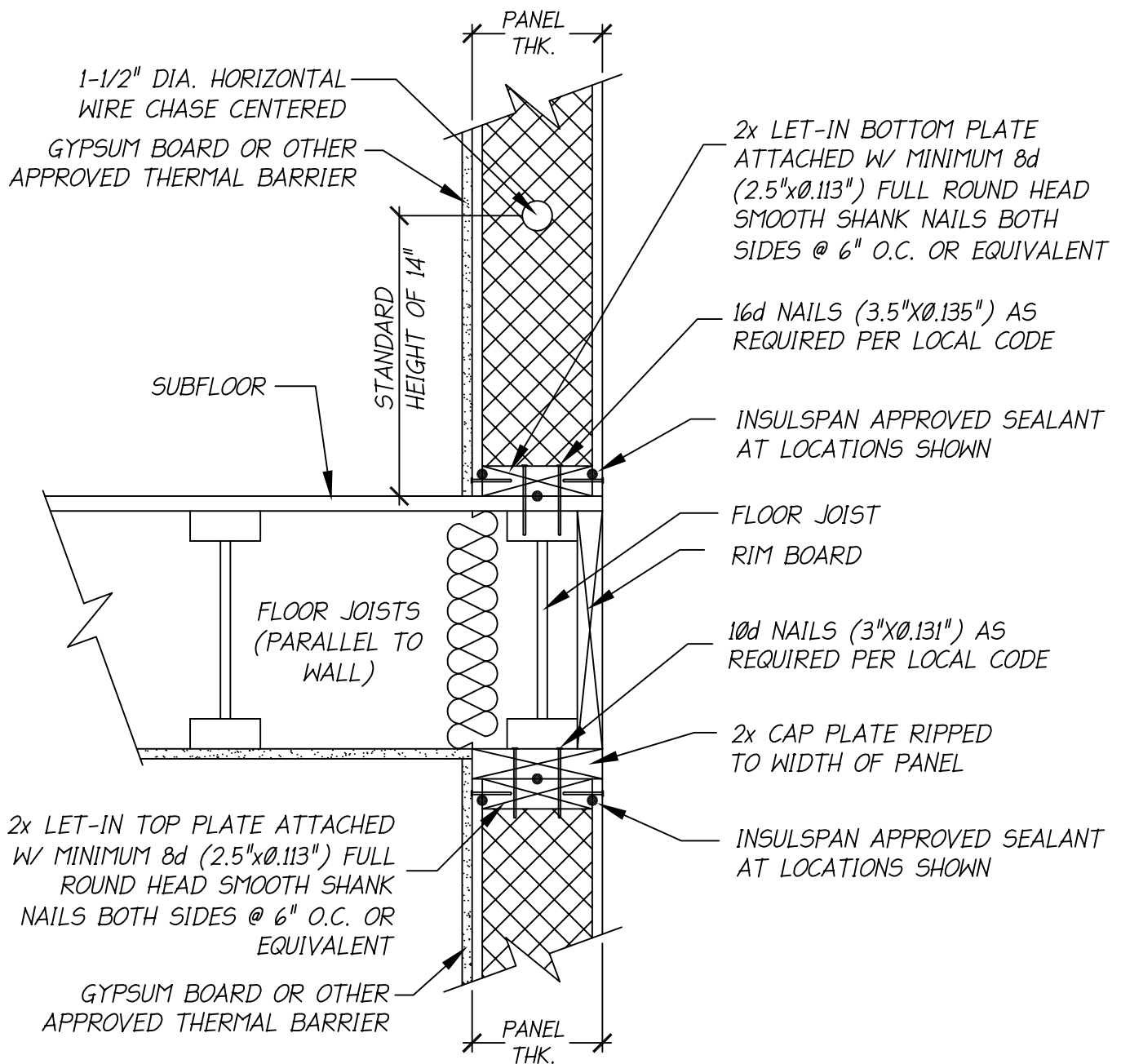
**INSULSPAN**  
STRUCTURAL INSULATING PANEL SYSTEM

**SIP WALL/FLOOR/JOIST PERPENDICULAR**

**SCALE: N.T.S.**

**LAST UPDATE: OCT 24, 2013**

**200.02**



NOTES:

1. THE DETAIL IS TO BE USED WITH INSULSPAN CONSTRUCTION DRAWINGS AND INSTALLATION GUIDE.  
REFER TO INSULSPAN CONSTRUCTION DRAWINGS FOR FINAL NAIL AND SCREW SCHEDULES.
2. ALL BUILDING COMPONENTS USED IN CONJUNCTION WITH THIS DETAIL SHALL BE IN COMPLIANCE WITH LOCAL CODE REQUIREMENTS.

**INSULSPAN**  
STRUCTURAL INSULATING PANEL SYSTEM

**SIP WALL/FLOOR/JOIST PARALLEL**

SCALE: N.T.S.

LAST UPDATE: OCT 24, 2013

200.02A