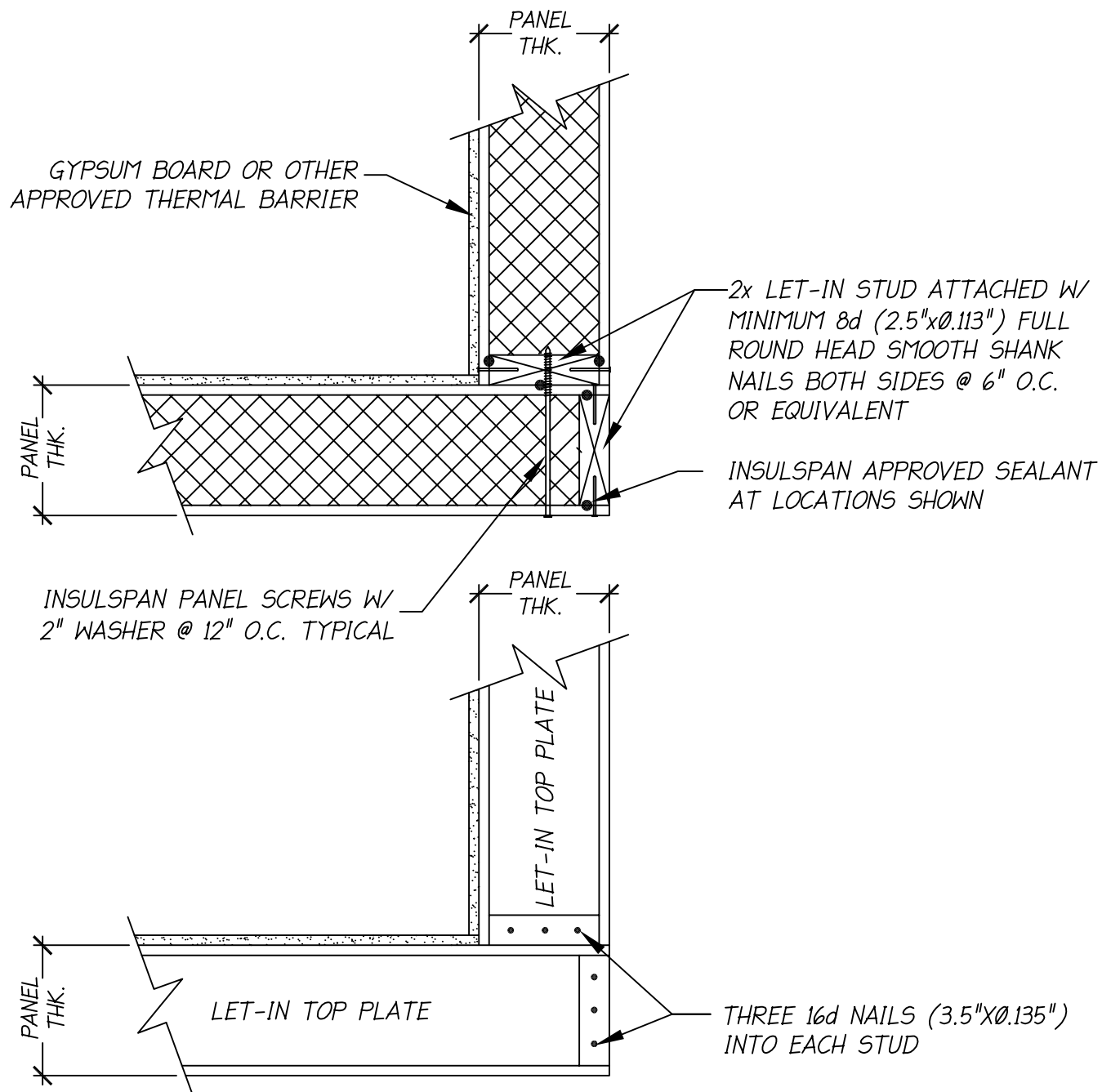


# Insulspan SIP System Design Manual

## Wall Corner Assembly Details





NOTES:

1. THE DETAIL IS TO BE USED WITH INSULSPAN CONSTRUCTION DRAWINGS AND INSTALLATION GUIDE. REFER TO INSULSPAN CONSTRUCTION DRAWINGS FOR FINAL NAIL AND SCREW SCHEDULES.
2. ALL BUILDING COMPONENTS USED IN CONJUNCTION WITH THIS DETAIL SHALL BE IN COMPLIANCE WITH LOCAL CODE REQUIREMENTS.

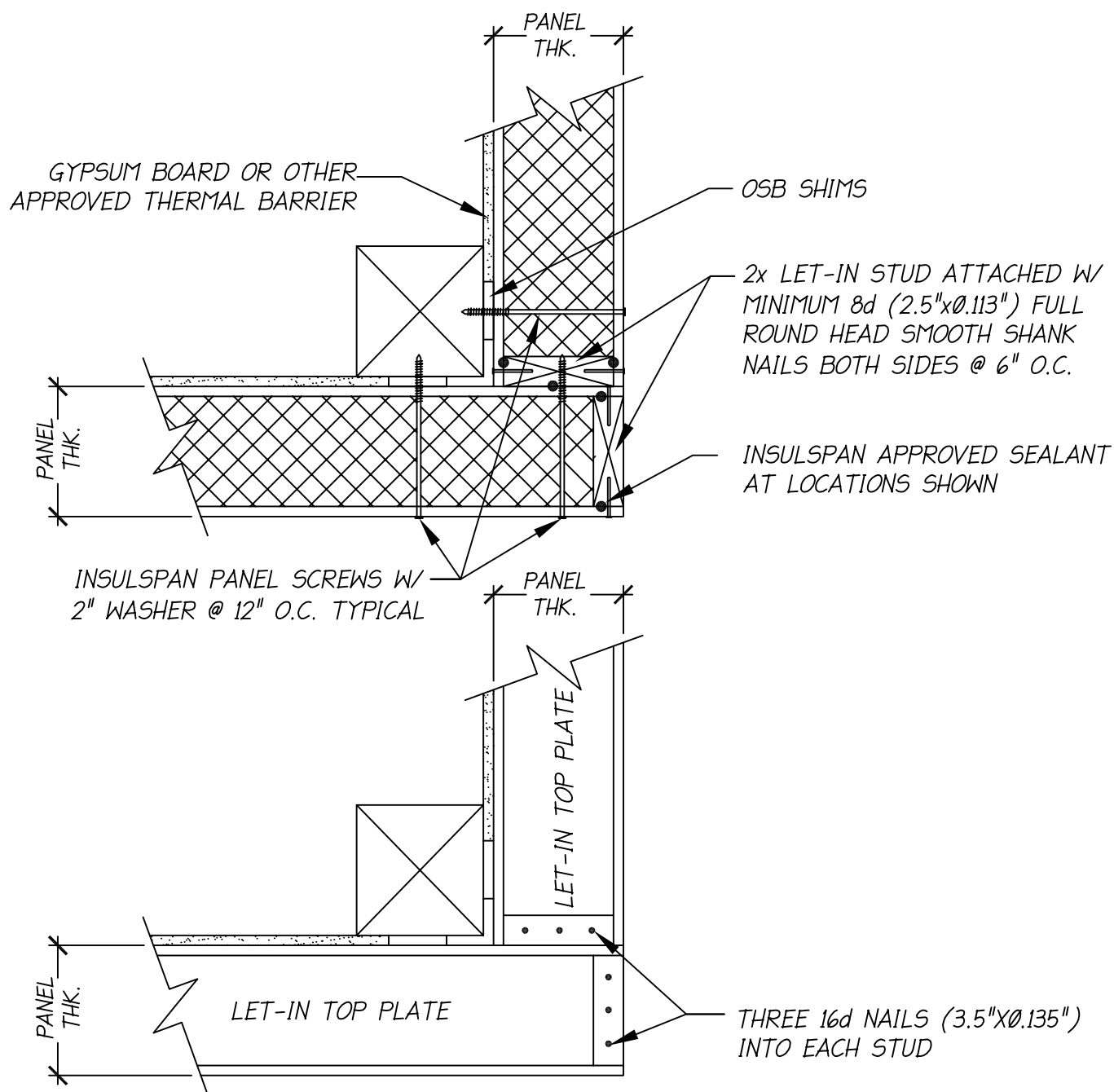
**INSULSPAN**  
STRUCTURAL INSULATING PANEL SYSTEM

## SIP WALL CORNER

SCALE: N.T.S.

LAST UPDATE: OCT 24, 2013

200.03



**NOTES:**

1. THE DETAIL IS TO BE USED WITH INSULSPAN CONSTRUCTION DRAWINGS AND INSTALLATION GUIDE.  
REFER TO INSULSPAN CONSTRUCTION DRAWINGS FOR FINAL NAIL AND SCREW SCHEDULES.
2. ALL BUILDING COMPONENTS USED IN CONJUNCTION WITH THIS DETAIL SHALL BE IN COMPLIANCE WITH LOCAL CODE REQUIREMENTS.

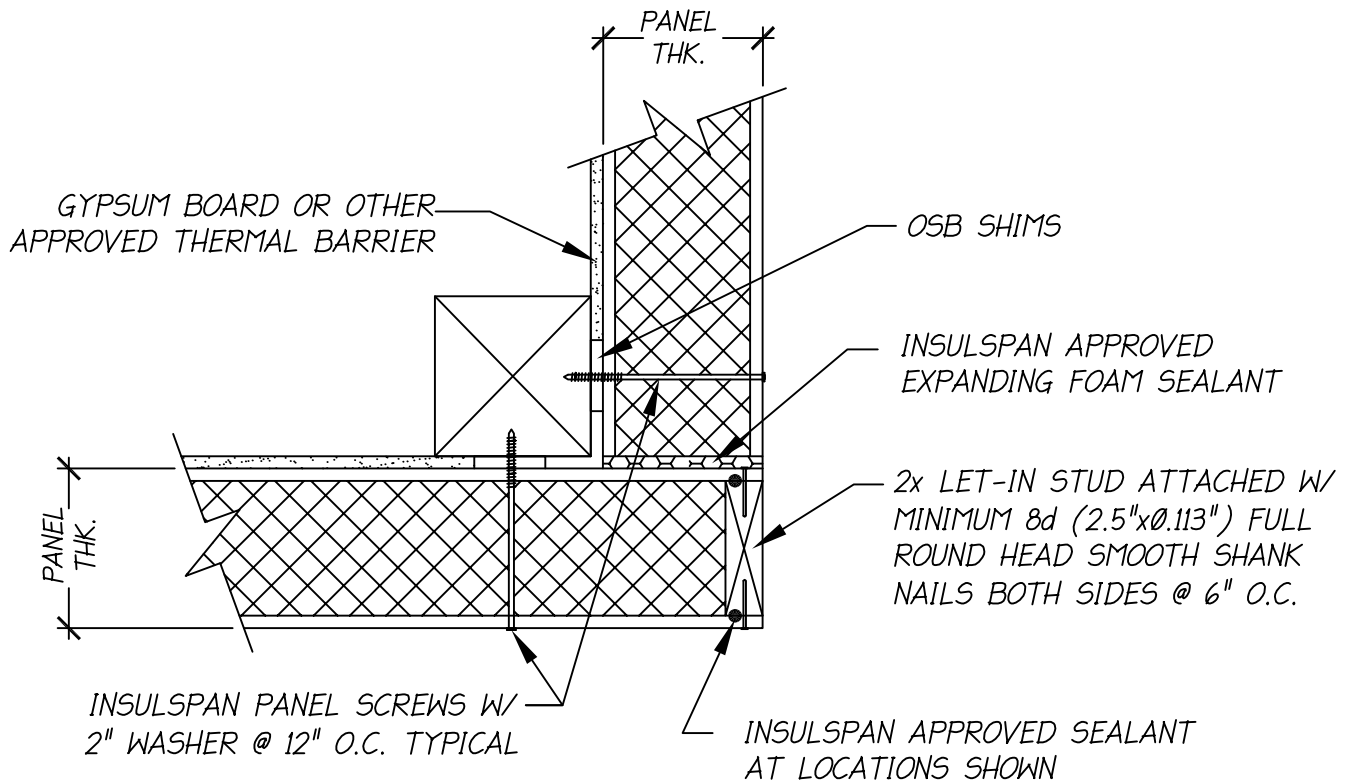
**INSULSPAN**  
STRUCTURAL INSULATING PANEL SYSTEM

**SIP WALL CORNER/TIMBER FRAME**

SCALE: N.T.S.

LAST UPDATE: OCT 24, 2013

200.04



**NOTES:**

1. THE DETAIL IS TO BE USED WITH INSULSPAN CONSTRUCTION DRAWINGS AND INSTALLATION GUIDE. REFER TO INSULSPAN CONSTRUCTION DRAWINGS FOR FINAL NAIL AND SCREW SCHEDULES.
2. ALL BUILDING COMPONENTS USED IN CONJUNCTION WITH THIS DETAIL SHALL BE IN COMPLIANCE WITH LOCAL CODE REQUIREMENTS.

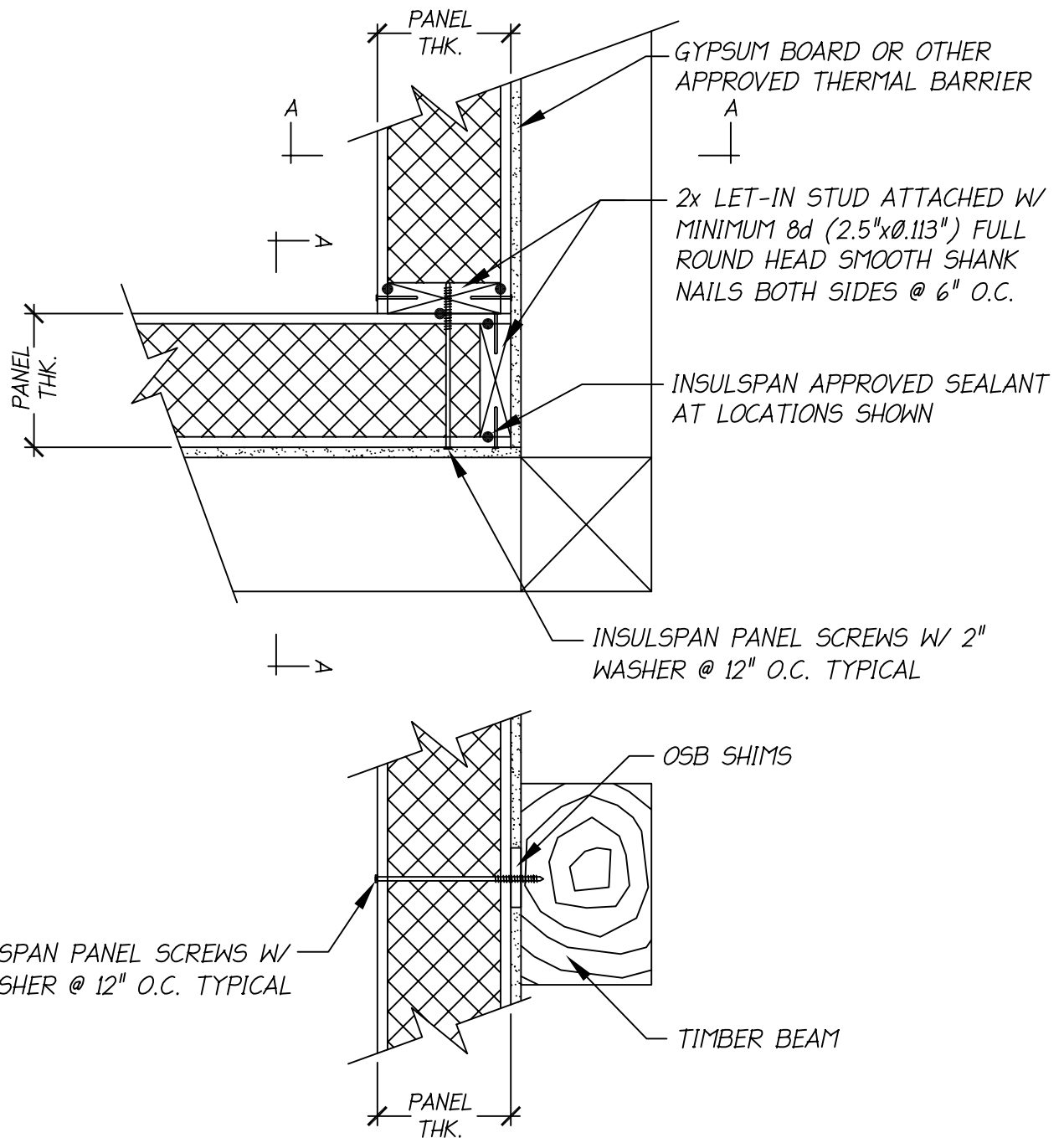
**INSULSPAN**  
STRUCTURAL INSULATING PANEL SYSTEM

**SIP WALL CORNER/TIMBER FRAME/FOAM GAP**

**SCALE: N.T.S.**

**LAST UPDATE: OCT 24, 2013**

**200.04A**



**NOTES:**

1. THE DETAIL IS TO BE USED WITH INSULSPAN CONSTRUCTION DRAWINGS AND INSTALLATION GUIDE.  
REFER TO INSULSPAN CONSTRUCTION DRAWINGS FOR FINAL NAIL AND SCREW SCHEDULES.
2. ALL BUILDING COMPONENTS USED IN CONJUNCTION WITH THIS DETAIL SHALL BE IN COMPLIANCE WITH LOCAL CODE REQUIREMENTS.

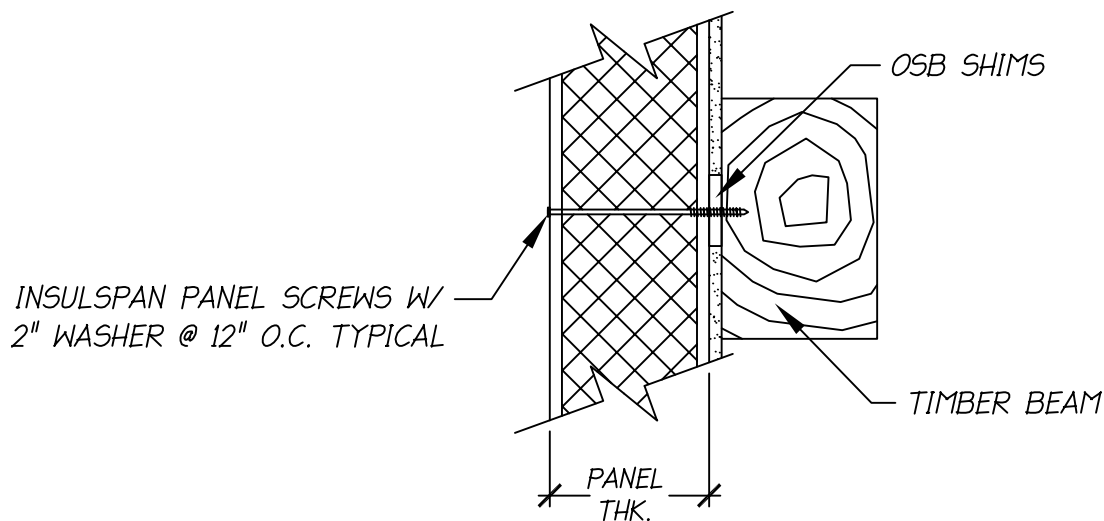
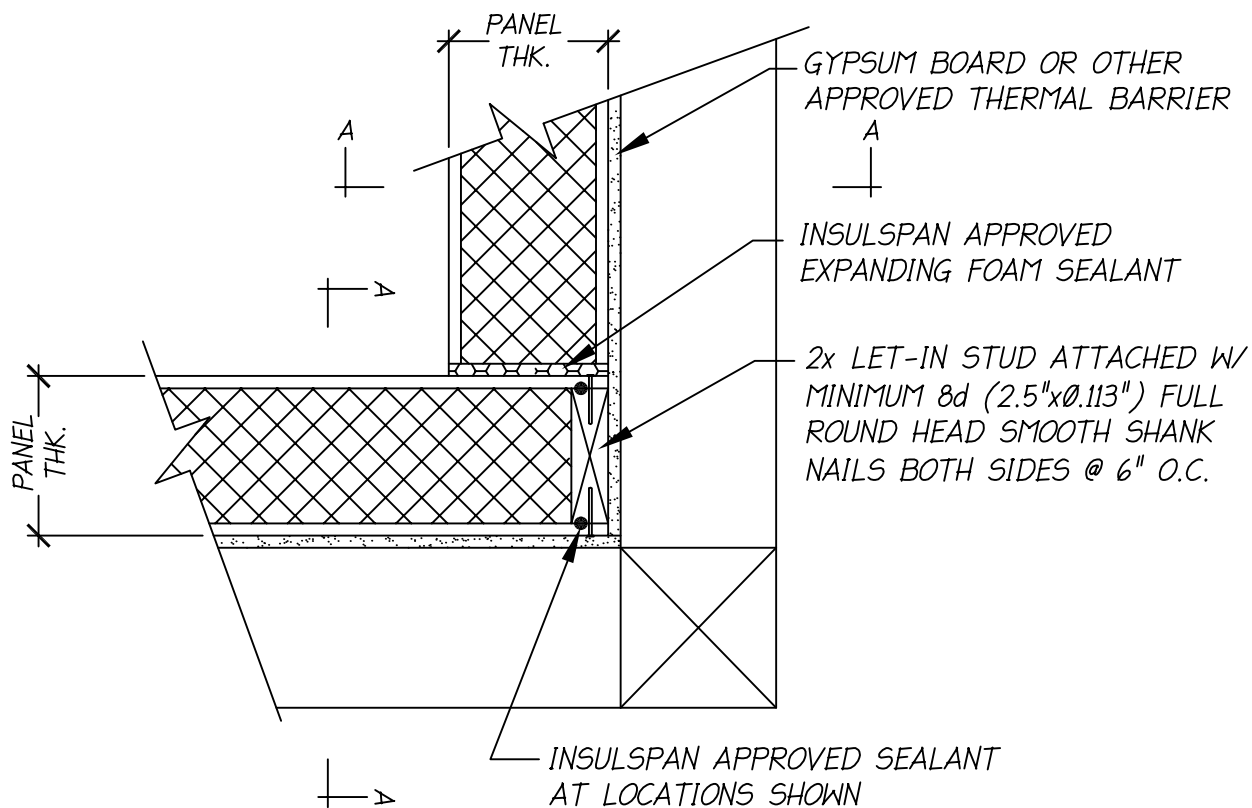
**INSULSPAN**  
STRUCTURAL INSULATING PANEL SYSTEM

**SIP WALL INSIDE CORNER/TIMBER FRAME**

SCALE: N.T.S.

LAST UPDATE: OCT 24, 2013

**200.05**



**NOTES:**

1. THE DETAIL IS TO BE USED WITH INSULSPAN CONSTRUCTION DRAWINGS AND INSTALLATION GUIDE.  
REFER TO INSULSPAN CONSTRUCTION DRAWINGS FOR FINAL NAIL AND SCREW SCHEDULES.
2. ALL BUILDING COMPONENTS USED IN CONJUNCTION WITH THIS DETAIL SHALL BE IN COMPLIANCE WITH LOCAL CODE REQUIREMENTS.

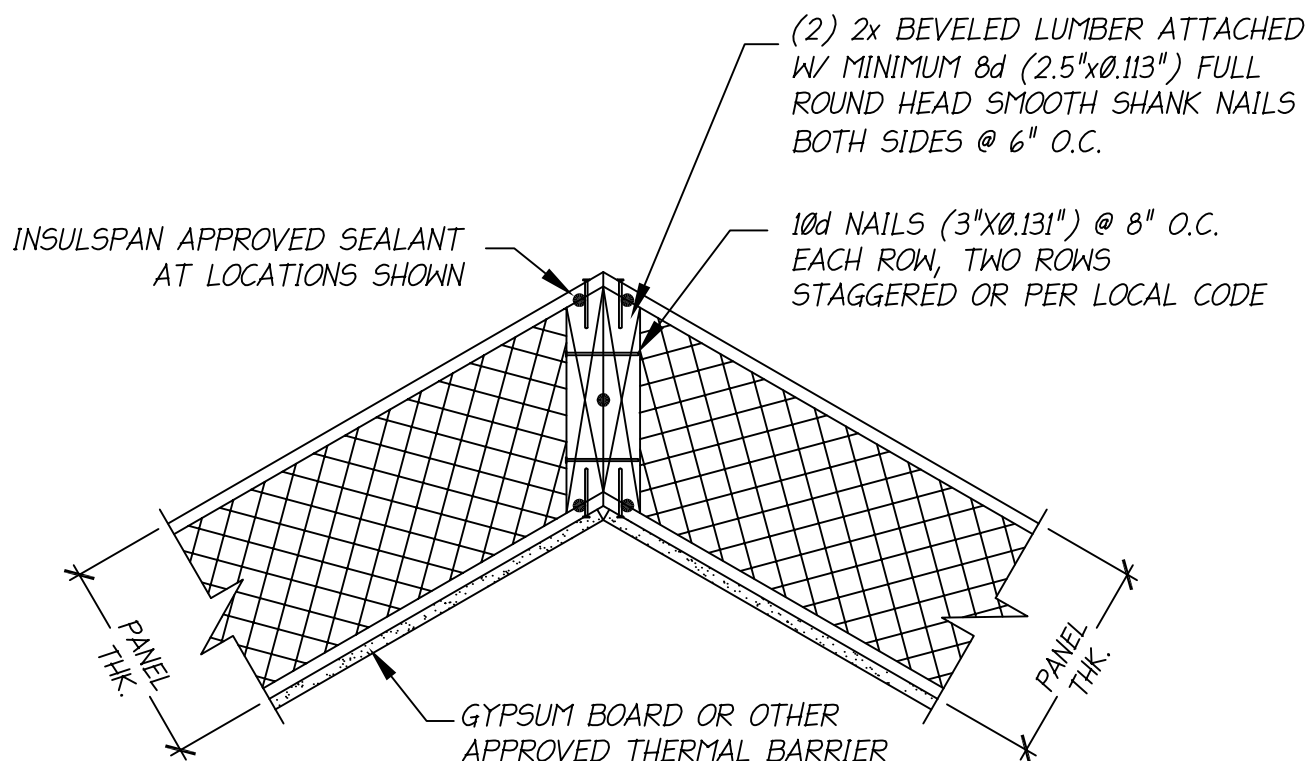
**INSULSPAN**  
STRUCTURAL INSULATING PANEL SYSTEM

**SIP WALL INSIDE CORNER/TIMBER FRAME/FOAM GAP**

**SCALE:N.T.S.**

**LAST UPDATE: OCT 24, 2013**

**200.05A**



NOTES:

1. THE DETAIL IS TO BE USED WITH INSULSPAN CONSTRUCTION DRAWINGS AND INSTALLATION GUIDE. REFER TO INSULSPAN CONSTRUCTION DRAWINGS FOR FINAL NAIL AND SCREW SCHEDULES.
2. ALL BUILDING COMPONENTS USED IN CONJUNCTION WITH THIS DETAIL SHALL BE IN COMPLIANCE WITH LOCAL CODE REQUIREMENTS.

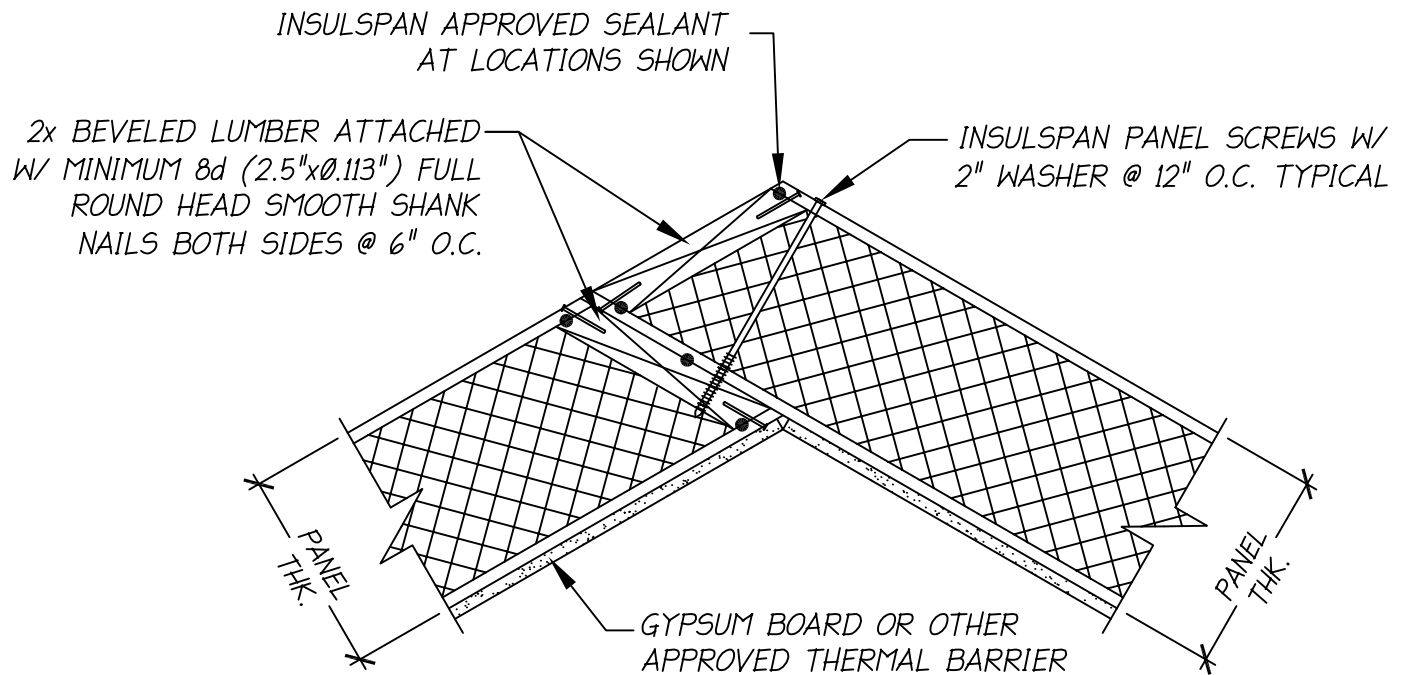
**INSULSPAN**  
STRUCTURAL INSULATING PANEL SYSTEM

## SIP WALL ANGLED CORNER

SCALE: N.T.S.

LAST UPDATE: OCT 24, 2013

200.06



NOTES:

1. THE DETAIL IS TO BE USED WITH INSULSPAN CONSTRUCTION DRAWINGS AND INSTALLATION GUIDE. REFER TO INSULSPAN CONSTRUCTION DRAWINGS FOR FINAL NAIL AND SCREW SCHEDULES.
2. ALL BUILDING COMPONENTS USED IN CONJUNCTION WITH THIS DETAIL SHALL BE IN COMPLIANCE WITH LOCAL CODE REQUIREMENTS.

**INSULSPAN**  
STRUCTURAL INSULATING PANEL SYSTEM

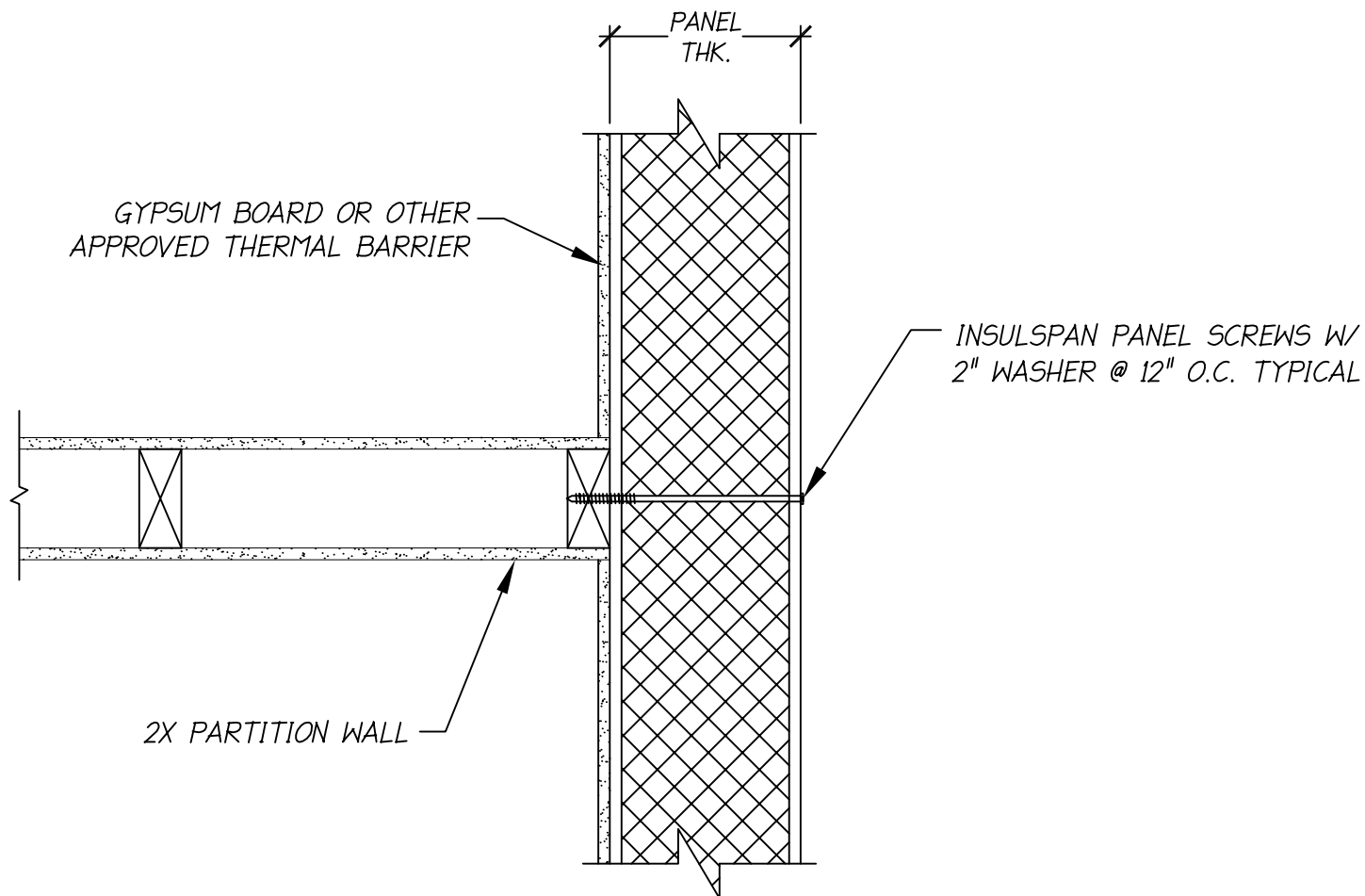
**SIP WALL ANGLED CORNER/OVERLAY**

SCALE: N.T.S.

LAST UPDATE: OCT 24, 2013

200.06A





NOTES:

1. THE DETAIL IS TO BE USED WITH INSULSPAN CONSTRUCTION DRAWINGS AND INSTALLATION GUIDE. REFER TO INSULSPAN CONSTRUCTION DRAWINGS FOR FINAL NAIL AND SCREW SCHEDULES.
2. ALL BUILDING COMPONENTS USED IN CONJUNCTION WITH THIS DETAIL SHALL BE IN COMPLIANCE WITH LOCAL CODE REQUIREMENTS.

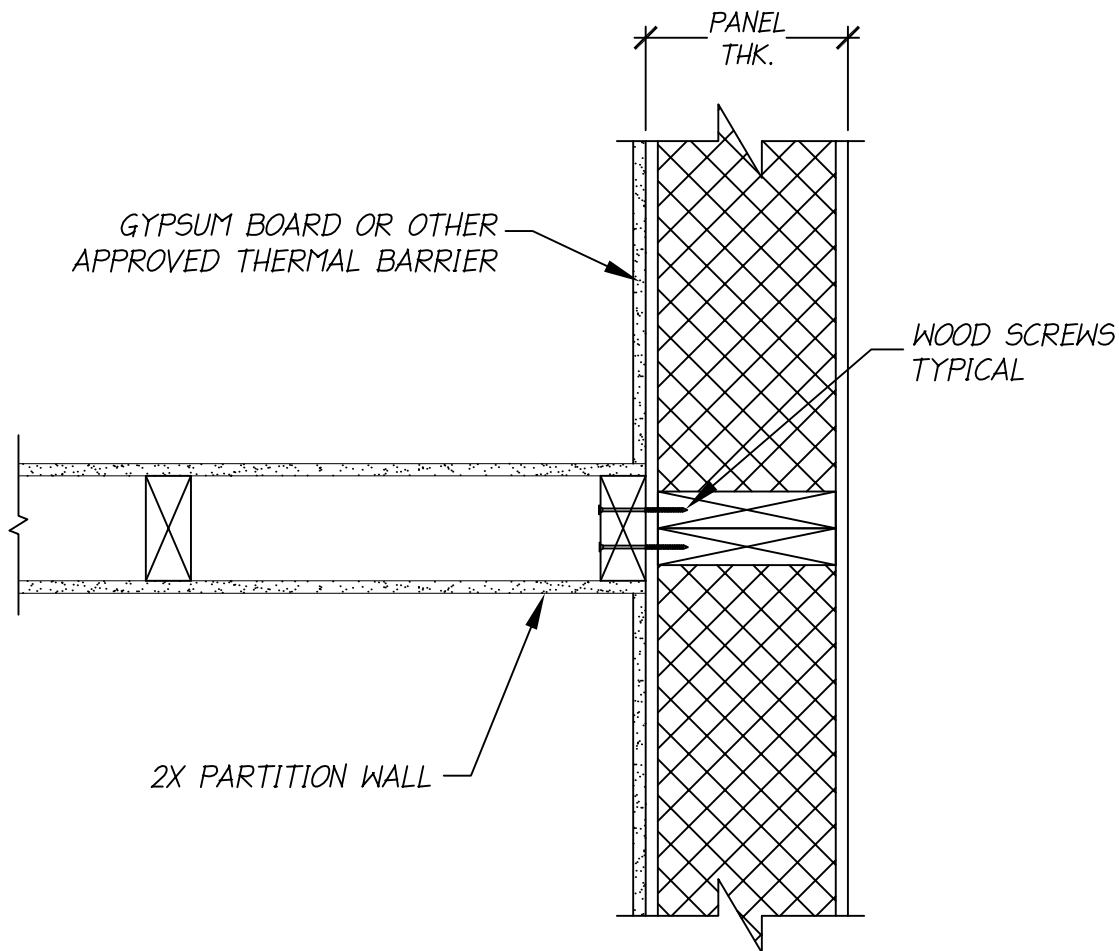
**INSULSPAN**  
STRUCTURAL INSULATING PANEL SYSTEM

**SIP WALL/PARTITION WALL**

SCALE: N.T.S.

LAST UPDATE: OCT 24, 2013

200.07



**NOTES:**

1. THE DETAIL IS TO BE USED WITH INSULSPAN CONSTRUCTION DRAWINGS AND INSTALLATION GUIDE. REFER TO INSULSPAN CONSTRUCTION DRAWINGS FOR FINAL NAIL AND SCREW SCHEDULES.
2. ALL BUILDING COMPONENTS USED IN CONJUNCTION WITH THIS DETAIL SHALL BE IN COMPLIANCE WITH LOCAL CODE REQUIREMENTS.

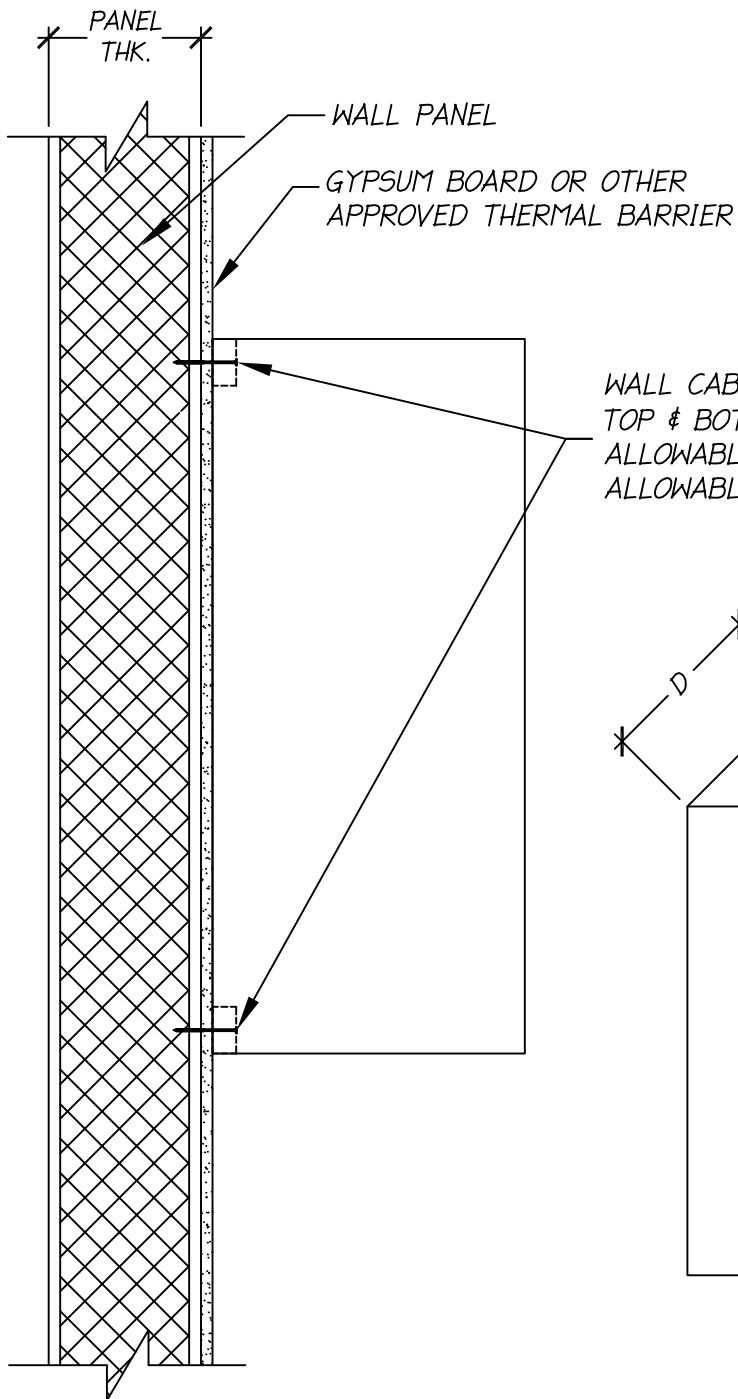
**INSULSPAN**  
STRUCTURAL INSULATING PANEL SYSTEM

## SIP WALL/PARTITION WALL

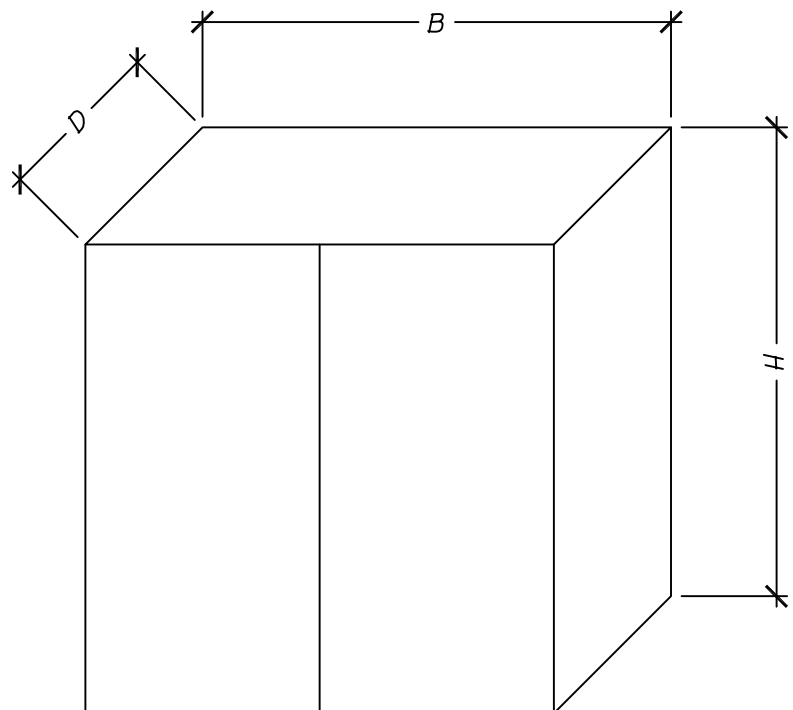
SCALE: N.T.S.

LAST UPDATE: OCT 24, 2013

200.07A



WALL CABINET INSTALLED WITH #8 x 2" DECK SCREWS  
 TOP & BOTTOM RAILS (1x2) SPACE AS REQUIRED  
 ALLOWABLE WITHDRAWAL LOAD PER SCREW = 35 LBS  
 ALLOWABLE SHEAR LOAD PER SCREW = 35 LBS



**INSULSPAN**  
 STRUCTURAL INSULATING PANEL SYSTEM

**SIP WALL/PARTITION WALL**

SCALE: N.T.S.

LAST UPDATE: OCT 24, 2013

200.08