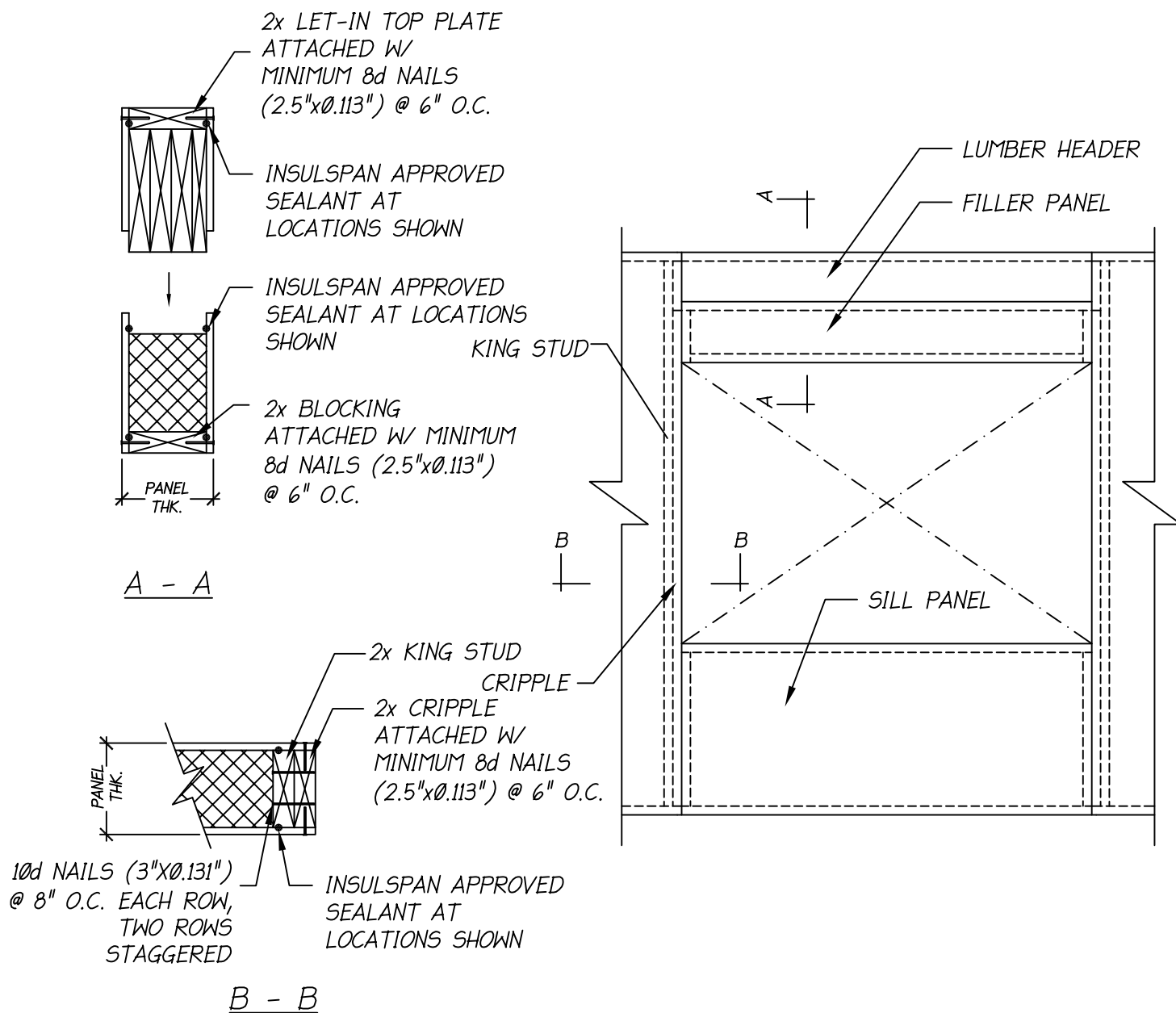


Insulspan SIP System Design Manual

Opening Details





NOTES:

1. THE DETAIL IS TO BE USED WITH INSULSPAN CONSTRUCTION DRAWINGS AND INSTALLATION GUIDE. REFER TO INSULSPAN CONSTRUCTION DRAWINGS FOR FINAL NAIL AND SCREW SCHEDULES.
2. ALL BUILDING COMPONENTS USED IN CONJUNCTION WITH THIS DETAIL SHALL BE IN COMPLIANCE WITH LOCAL CODE REQUIREMENTS.

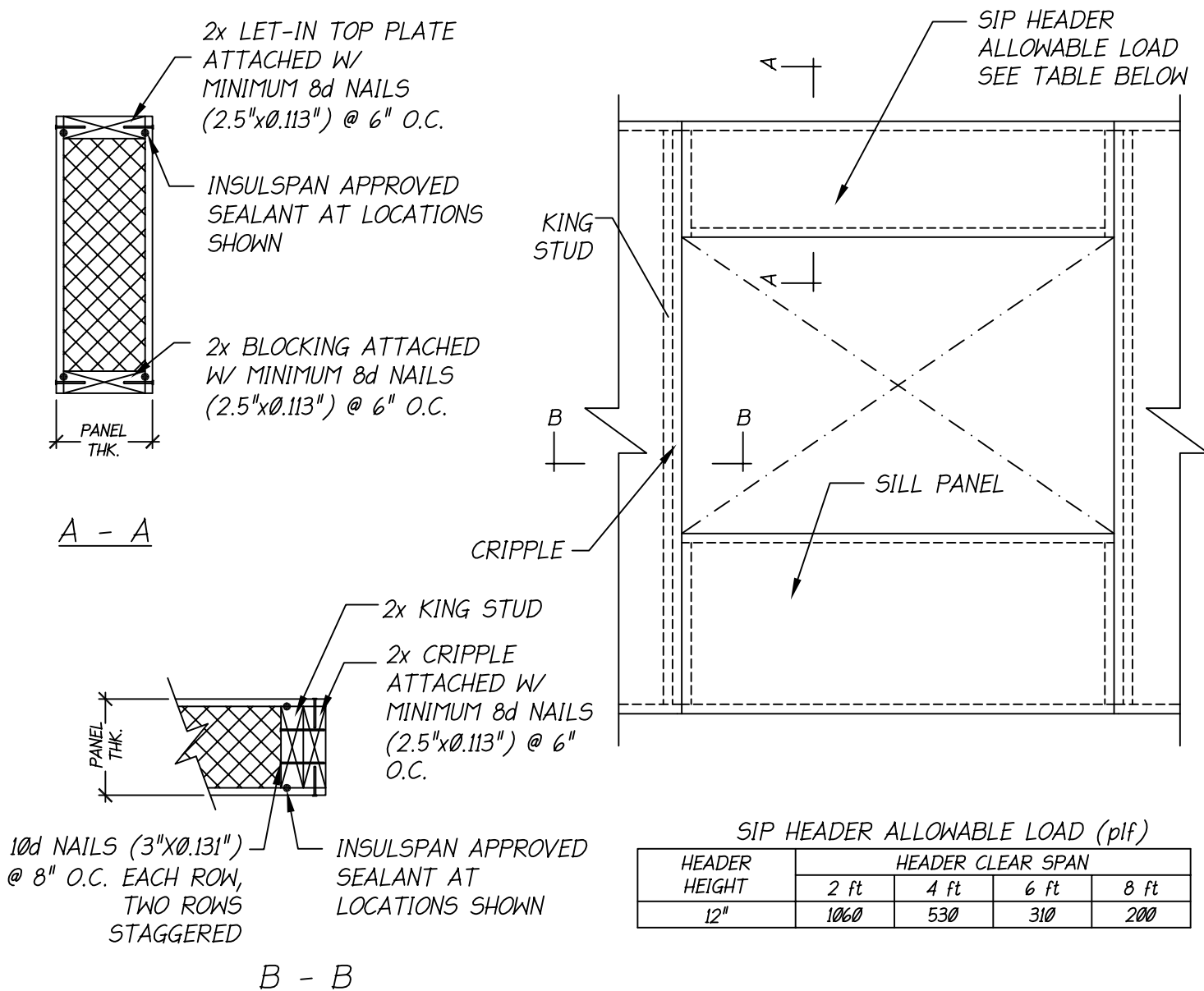
INSULSPAN
STRUCTURAL INSULATING PANEL SYSTEM

OPENING/LUMBER HEADER

SCALE: N.T.S.

LAST UPDATE: OCT 24, 2013

400.11



NOTES:

1. THE DETAIL IS TO BE USED WITH INSULSPAN CONSTRUCTION DRAWINGS AND INSTALLATION GUIDE. REFER TO INSULSPAN CONSTRUCTION DRAWINGS FOR FINAL NAIL AND SCREW SCHEDULES.
2. ALL BUILDING COMPONENTS USED IN CONJUNCTION WITH THIS DETAIL SHALL BE IN COMPLIANCE WITH LOCAL CODE REQUIREMENTS.

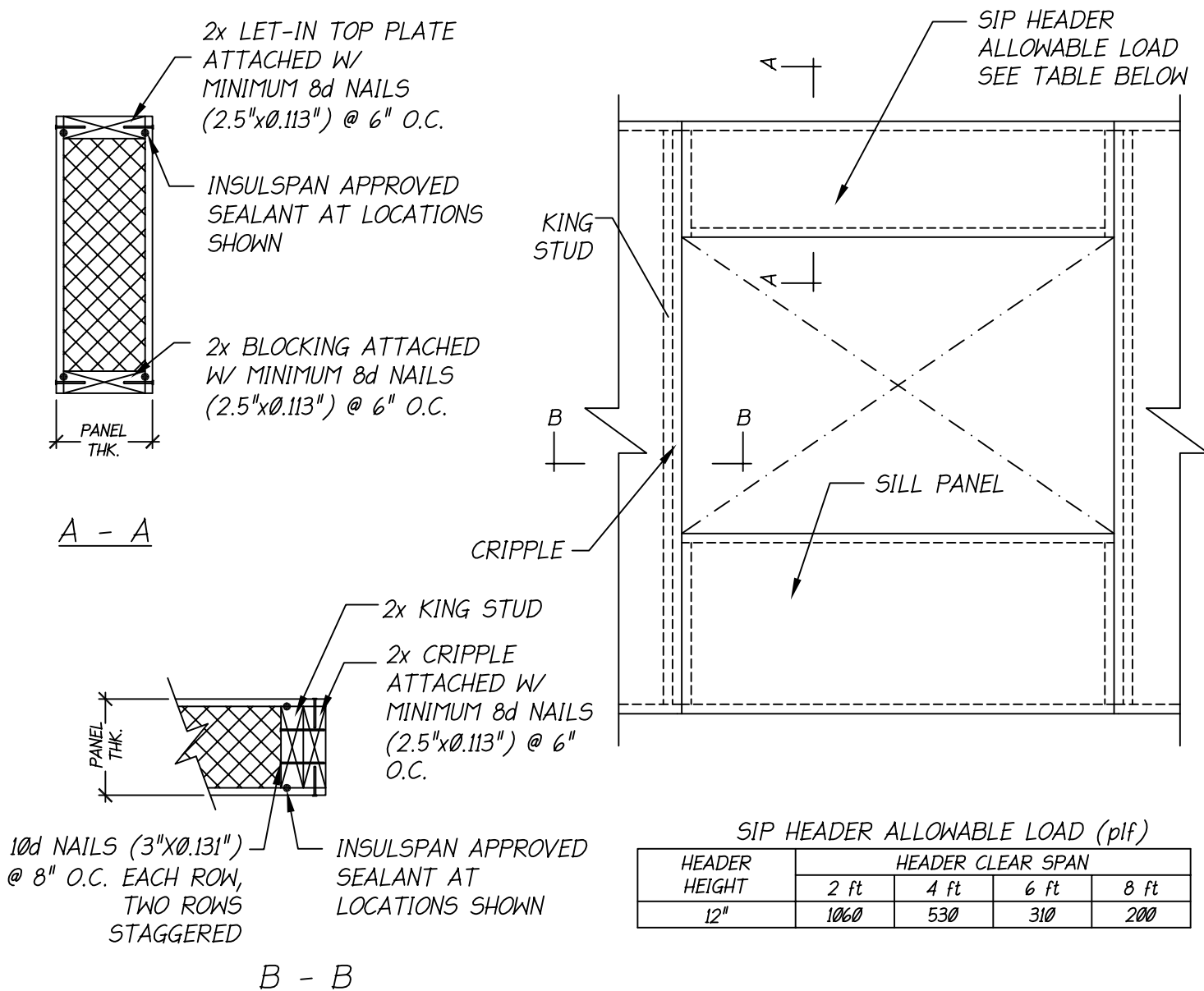
INSULSPAN
STRUCTURAL INSULATING PANEL SYSTEM

OPENING/SIP HEADER

SCALE: N.T.S.

LAST UPDATE: OCT 24, 2013

400.12



NOTES:

1. THE DETAIL IS TO BE USED WITH INSULSPAN CONSTRUCTION DRAWINGS AND INSTALLATION GUIDE. REFER TO INSULSPAN CONSTRUCTION DRAWINGS FOR FINAL NAIL AND SCREW SCHEDULES.
2. ALL BUILDING COMPONENTS USED IN CONJUNCTION WITH THIS DETAIL SHALL BE IN COMPLIANCE WITH LOCAL CODE REQUIREMENTS.

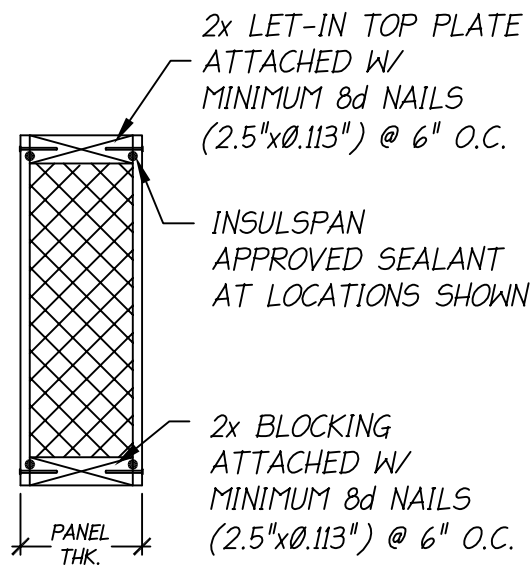
INSULSPAN
STRUCTURAL INSULATING PANEL SYSTEM

OPENING/SIP HEADER

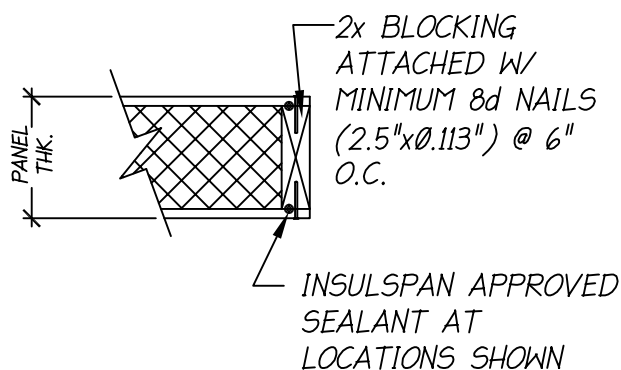
SCALE: N.T.S.

LAST UPDATE: OCT 24, 2013

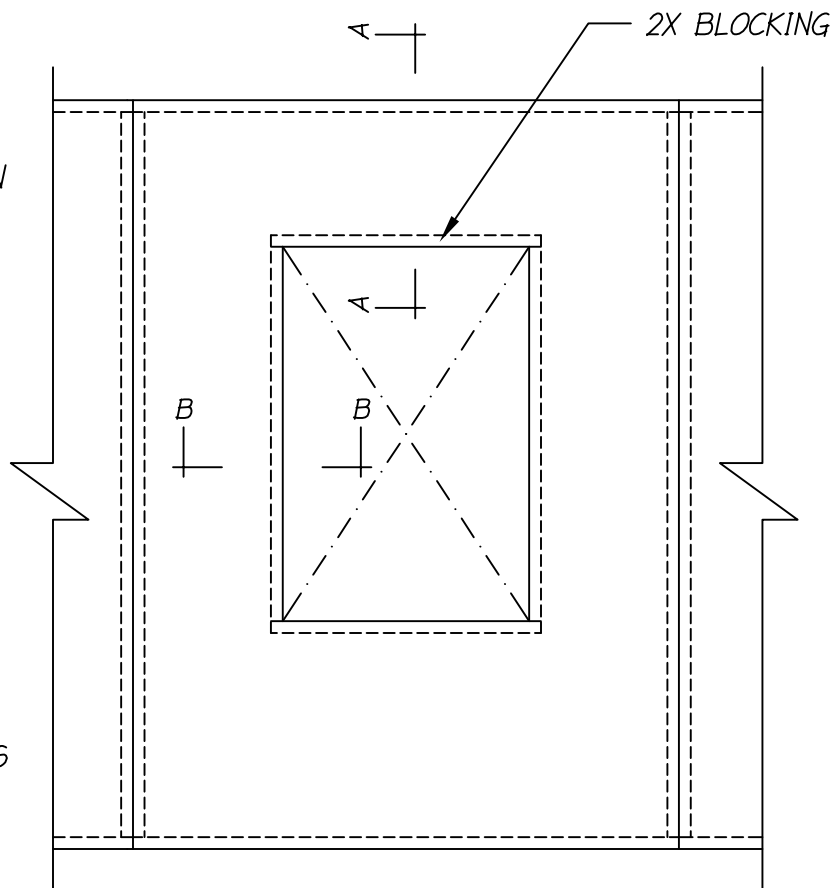
400.12



A - A



B - B



NOTES:

1. THE DETAIL IS TO BE USED WITH INSULSPAN CONSTRUCTION DRAWINGS AND INSTALLATION GUIDE. REFER TO INSULSPAN CONSTRUCTION DRAWINGS FOR FINAL NAIL AND SCREW SCHEDULES.
2. ALL BUILDING COMPONENTS USED IN CONJUNCTION WITH THIS DETAIL SHALL BE IN COMPLIANCE WITH LOCAL CODE REQUIREMENTS.

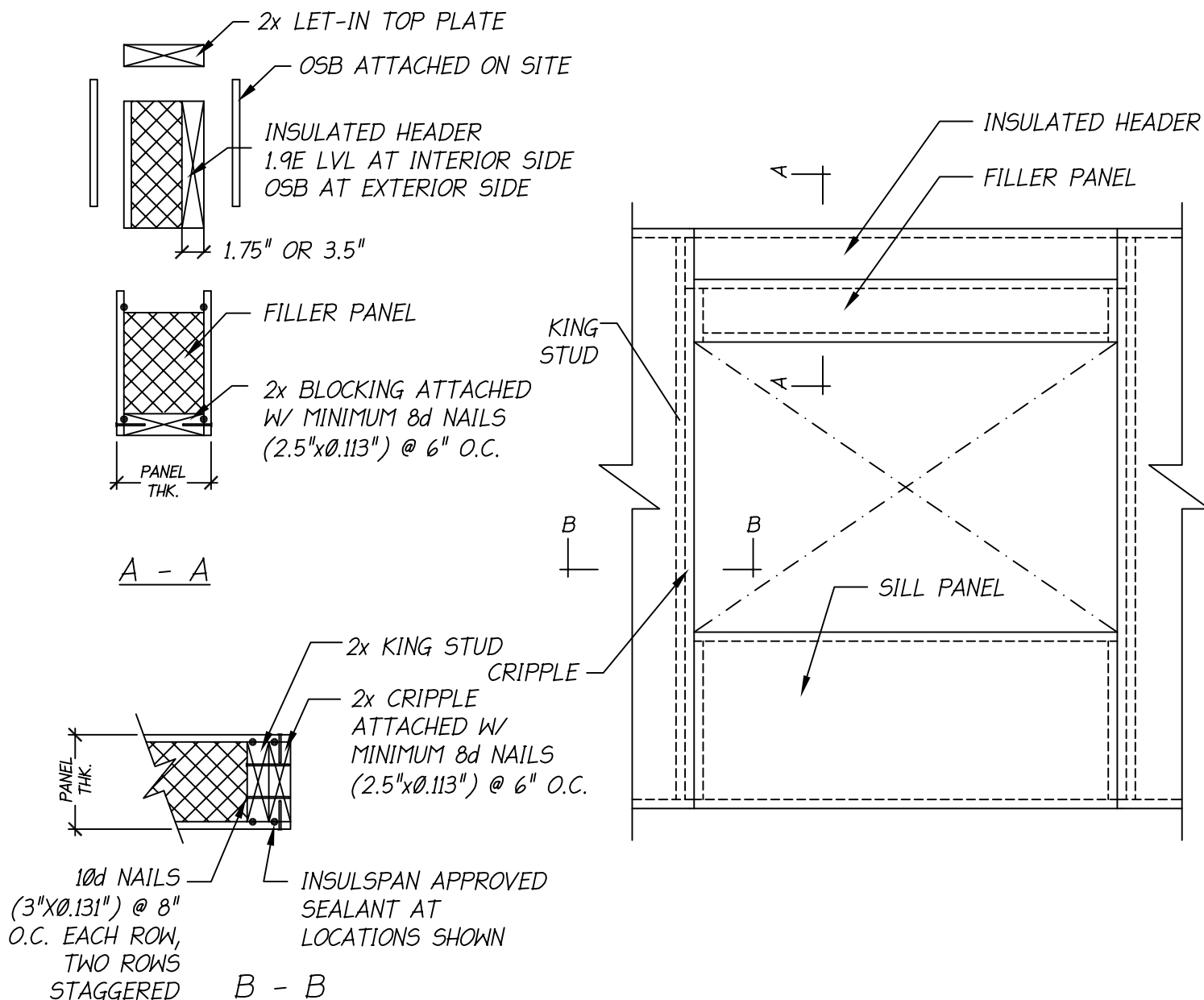
INSULSPAN
STRUCTURAL INSULATING PANEL SYSTEM

SMALL OPENING INSIDE PANEL

SCALE:N.T.S.

LAST UPDATE: OCT 24, 2013

400.13



NOTES:

1. THE DETAIL IS TO BE USED WITH INSULSPAN CONSTRUCTION DRAWINGS AND INSTALLATION GUIDE.
REFER TO INSULSPAN CONSTRUCTION DRAWINGS FOR FINAL NAIL AND SCREW SCHEDULES.
2. ALL BUILDING COMPONENTS USED IN CONJUNCTION WITH THIS DETAIL SHALL BE IN COMPLIANCE WITH LOCAL CODE REQUIREMENTS.

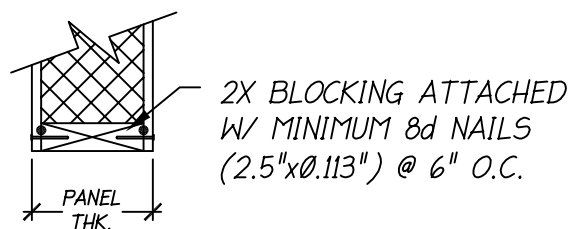
INSULSPAN
STRUCTURAL INSULATING PANEL SYSTEM

OPENING/INSULATED HEADER

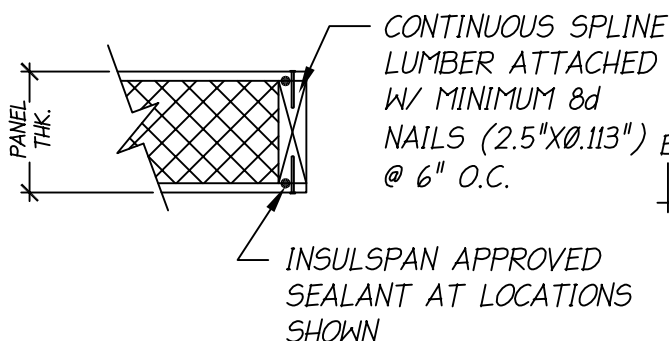
SCALE: N.T.S.

LAST UPDATE: OCT 24, 2013

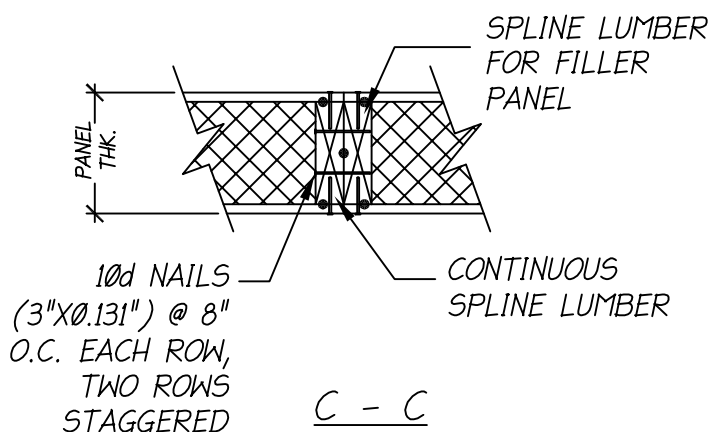
400.14



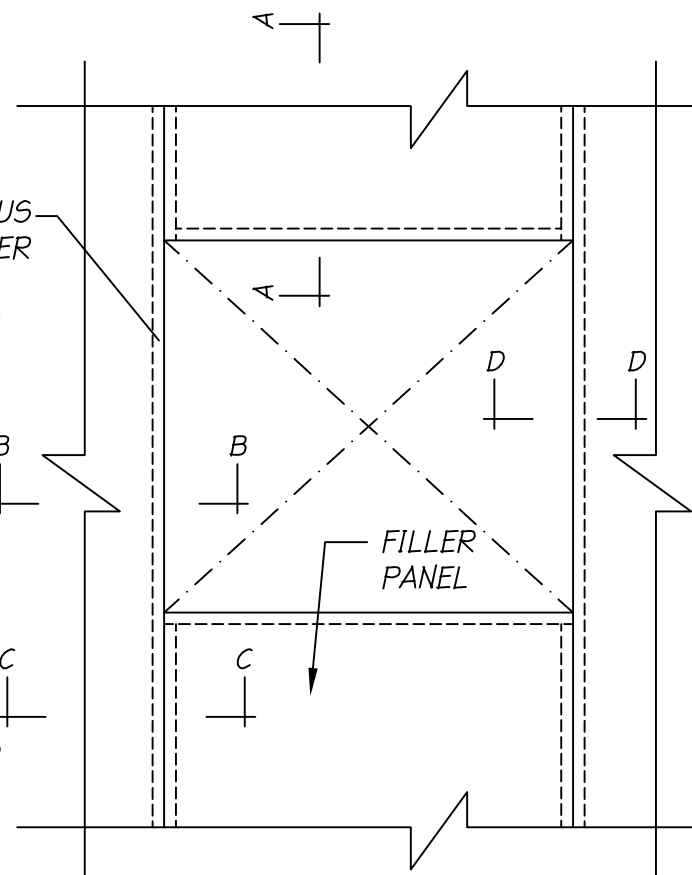
A - A



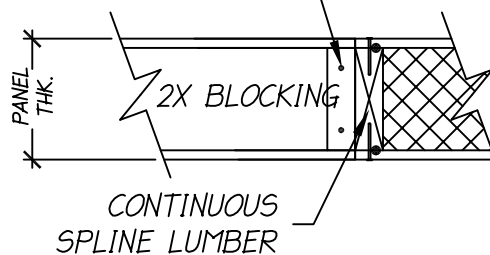
B - B



C - C



(2) 16d NAILS (3.5"x0.135")
INTO SPLINE LUMBER FOR
FILLER PANEL



D - D

NOTES:

1. THE DETAIL IS TO BE USED WITH INSULSPAN CONSTRUCTION DRAWINGS AND INSTALLATION GUIDE. REFER TO INSULSPAN CONSTRUCTION DRAWINGS FOR FINAL NAIL AND SCREW SCHEDULES.
2. ALL BUILDING COMPONENTS USED IN CONJUNCTION WITH THIS DETAIL SHALL BE IN COMPLIANCE WITH LOCAL CODE REQUIREMENTS.

INSULSPAN
STRUCTURAL INSULATING PANEL SYSTEM

SKYLIGHT OPENING

SCALE: N.T.S.

LAST UPDATE: OCT 24, 2013

400.15